

Microsoft SQL Server

- [Downloading and Installing Microsoft SQL Server](#)
- [Downloading and Installing Microsoft SQL Management Studio](#)
- [Configure Microsoft SQL Server](#)

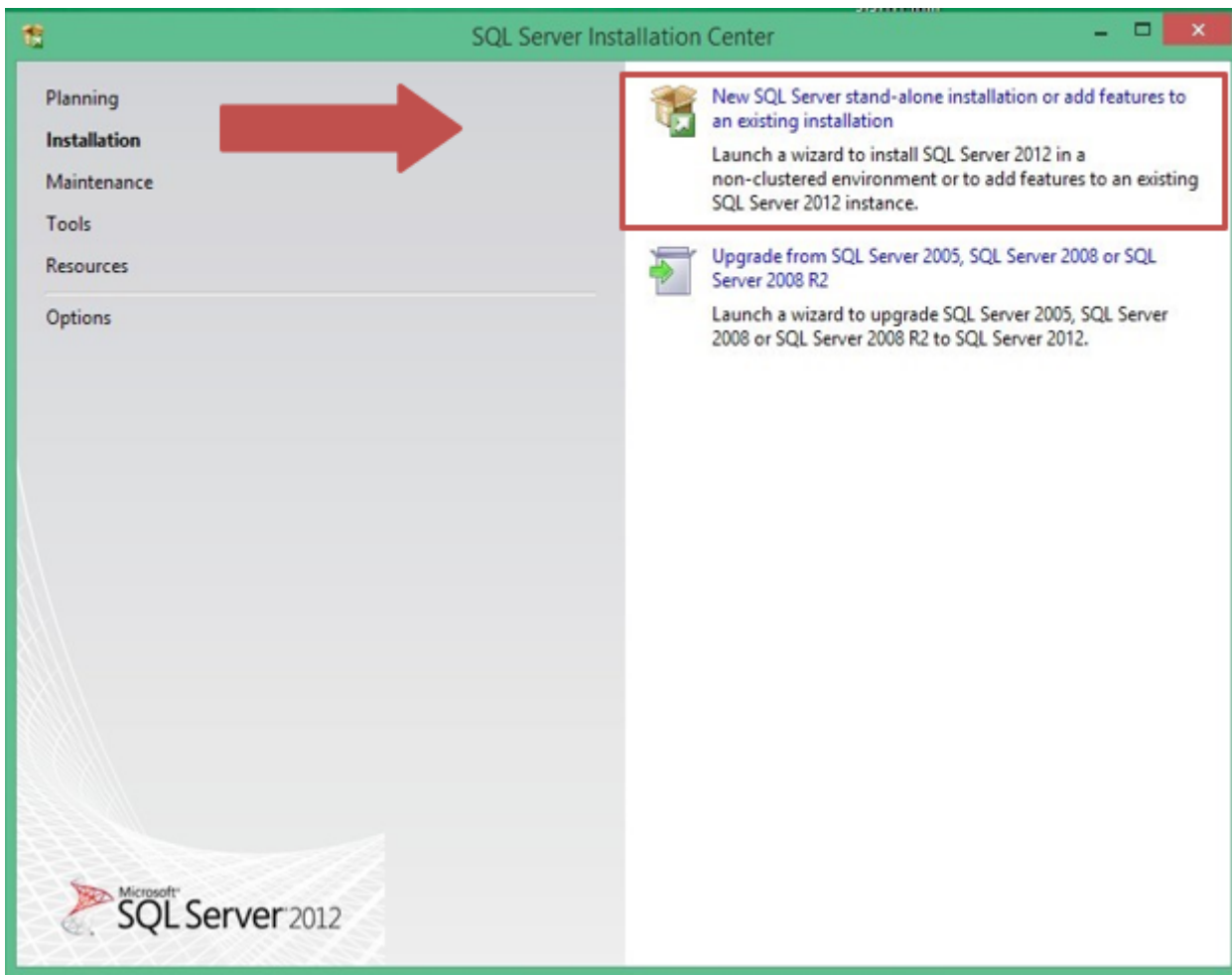
Downloading and Installing Microsoft SQL Server

Installing & Configuring Microsoft SQL Server Express 2012

After downloading the Microsoft SQL Server Express Installer Package run it by double clicking on it.

The installer package will begin to extract files from the package. Once that has completed you will be presented with a screen as seen below.

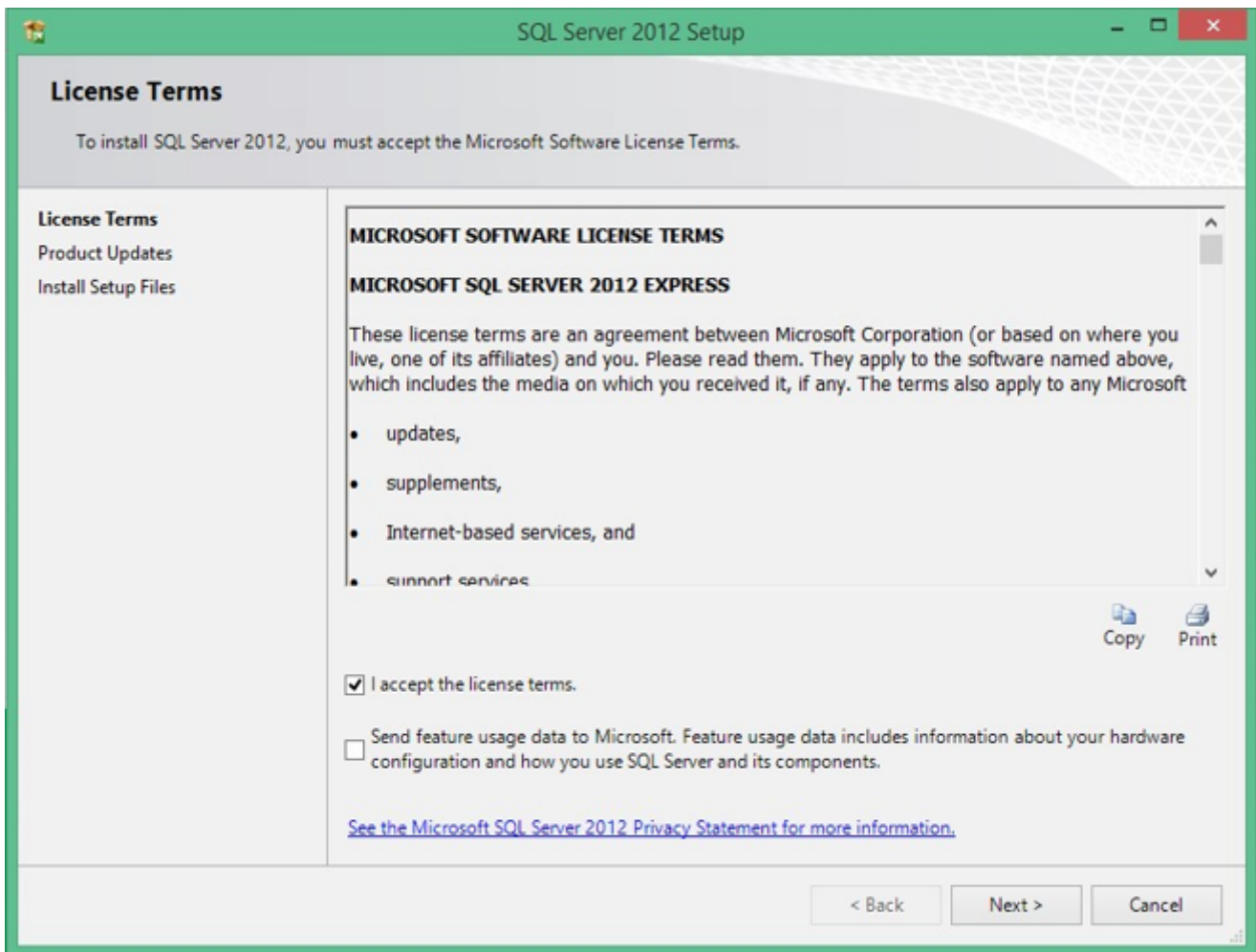
Click the indicated link below to begin the installation!



Accepting the License Terms for Microsoft SQL Server Express 2012

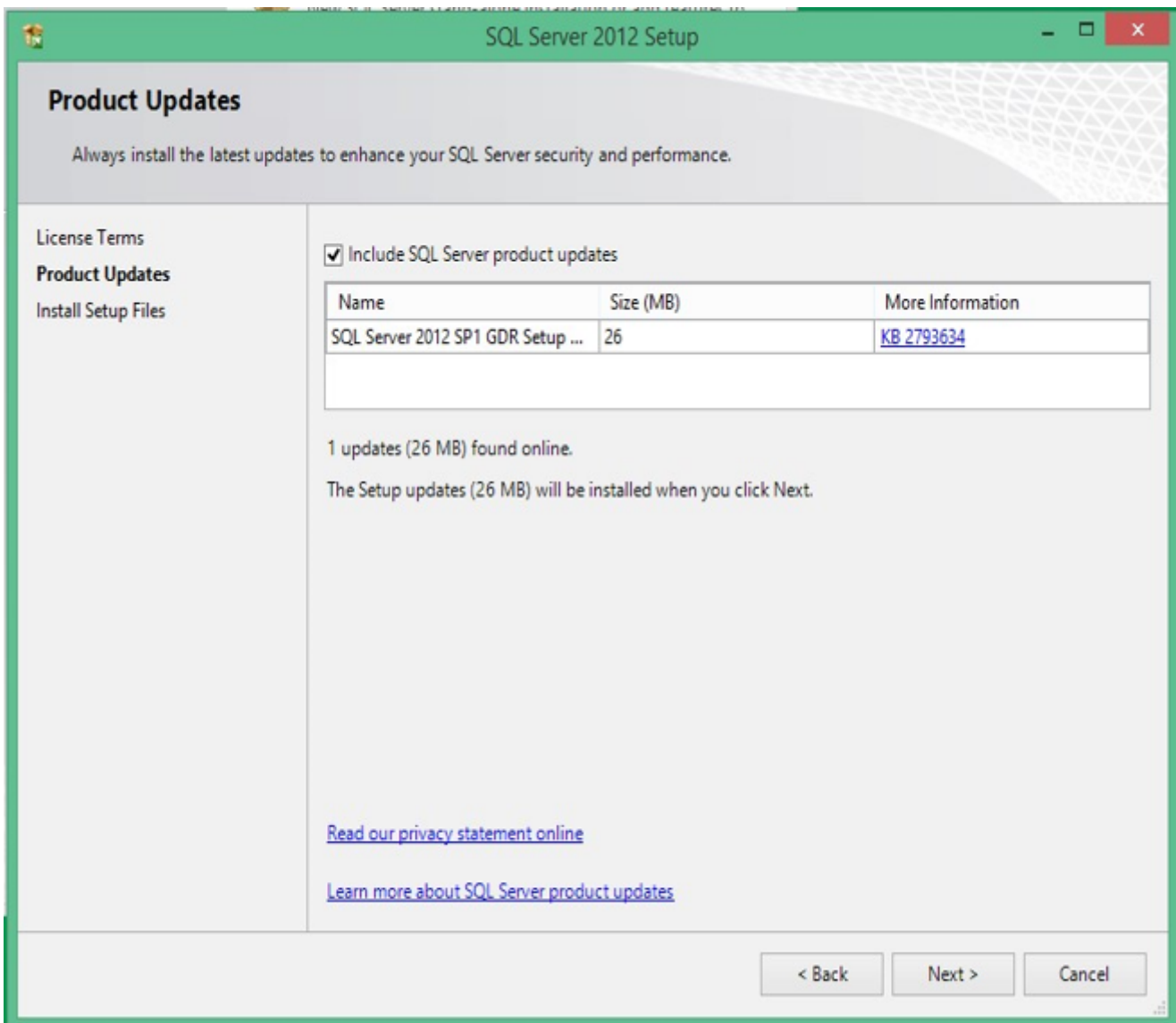
You will be asked to accept the License Terms. To complete this select the check box next to 'I accept the license terms.' and click next.

Note: Be sure to leave the box below that unchecked.



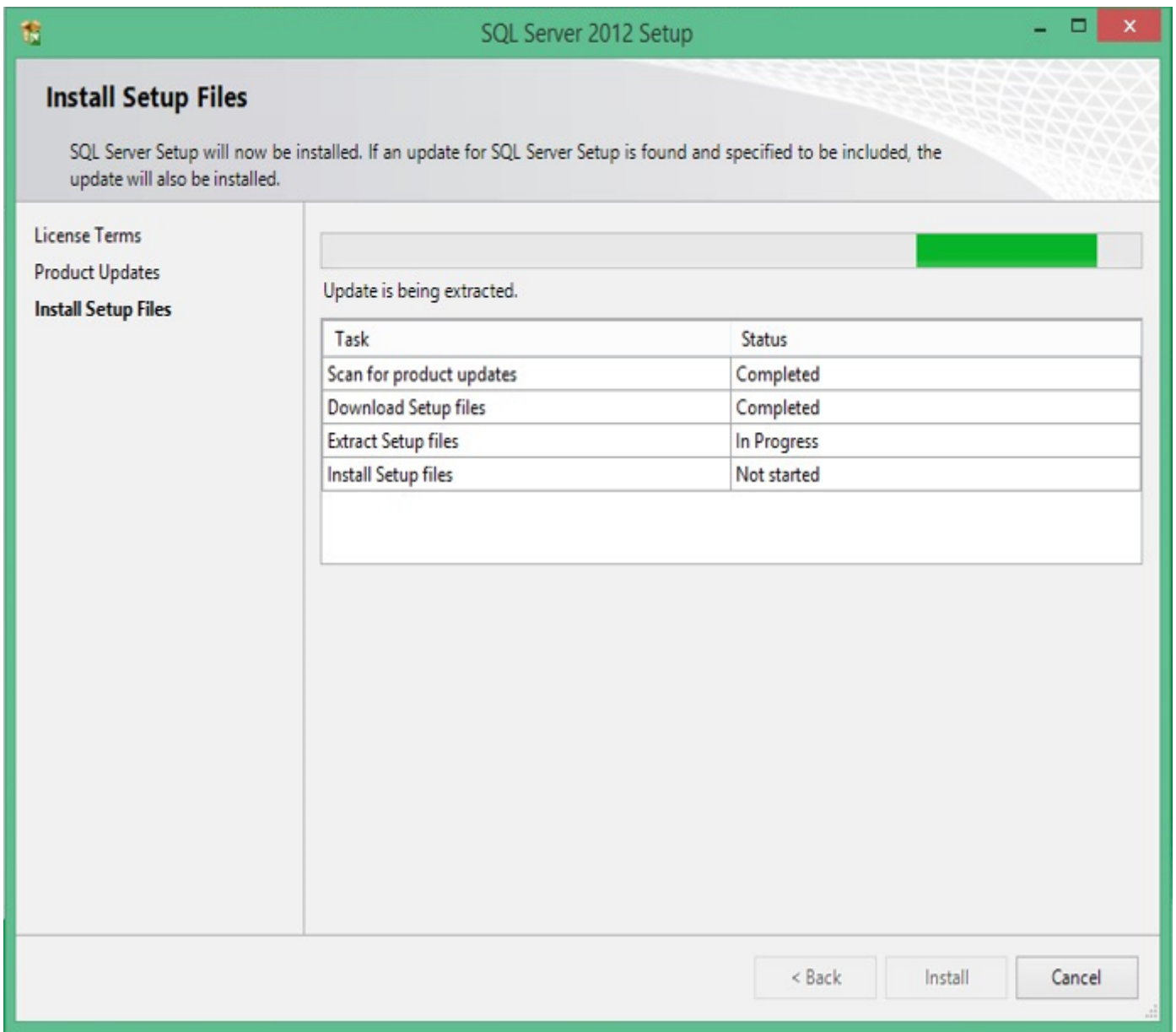
Setting up the Product Updates for Microsoft SQL Server Express 2012

Select the check box next to 'Include SQL Server product updates', then click next.



The installation of the Setup Files for Microsoft SQL Server Express 2012

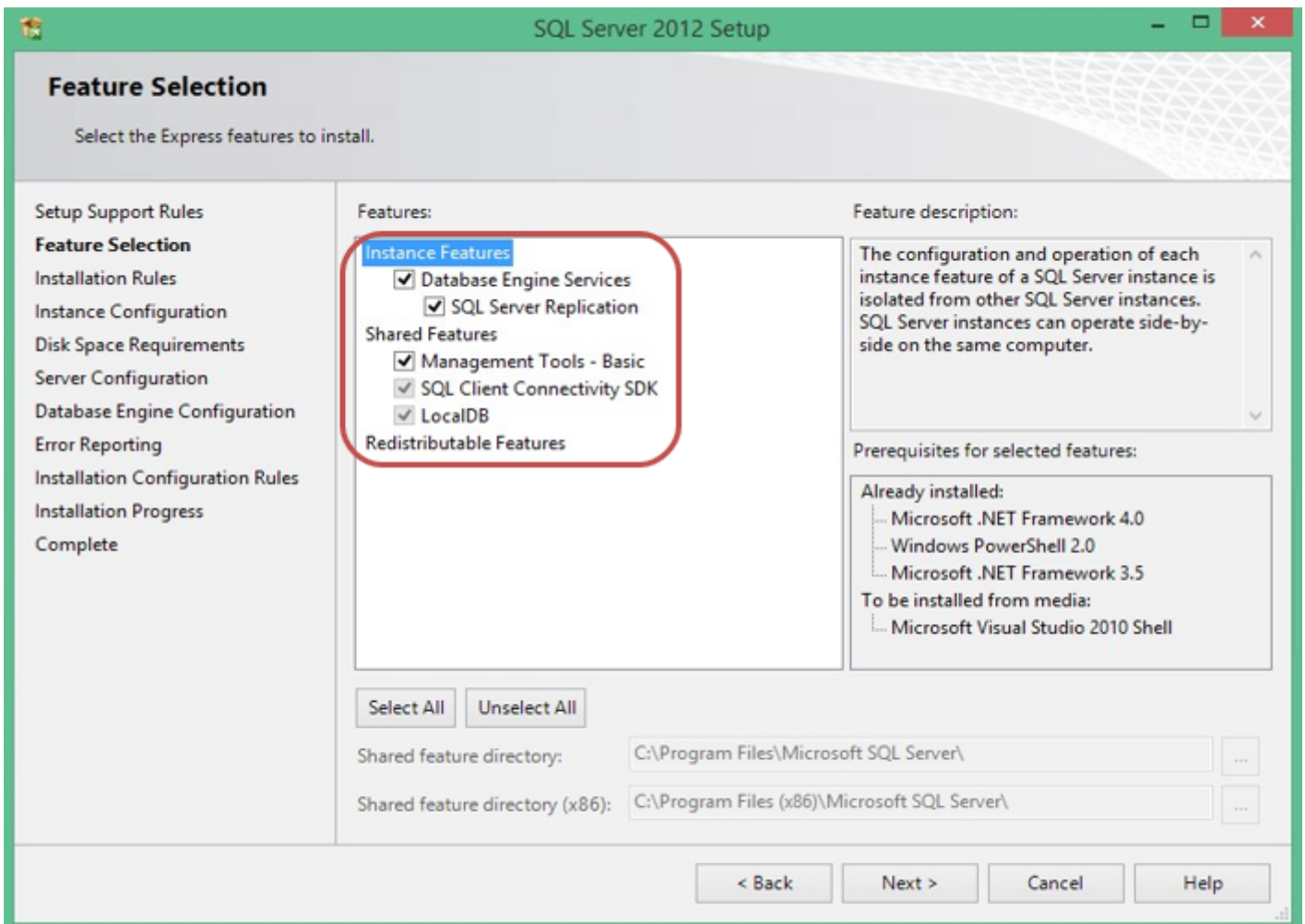
Wait for the installation process to complete and click next.



Microsoft SQL Server Express 2012 Feature Selection

During the SQL installation process, you will be asked to select features for the SQL Server.

Be sure to check ALL features as shown in the screen shot.

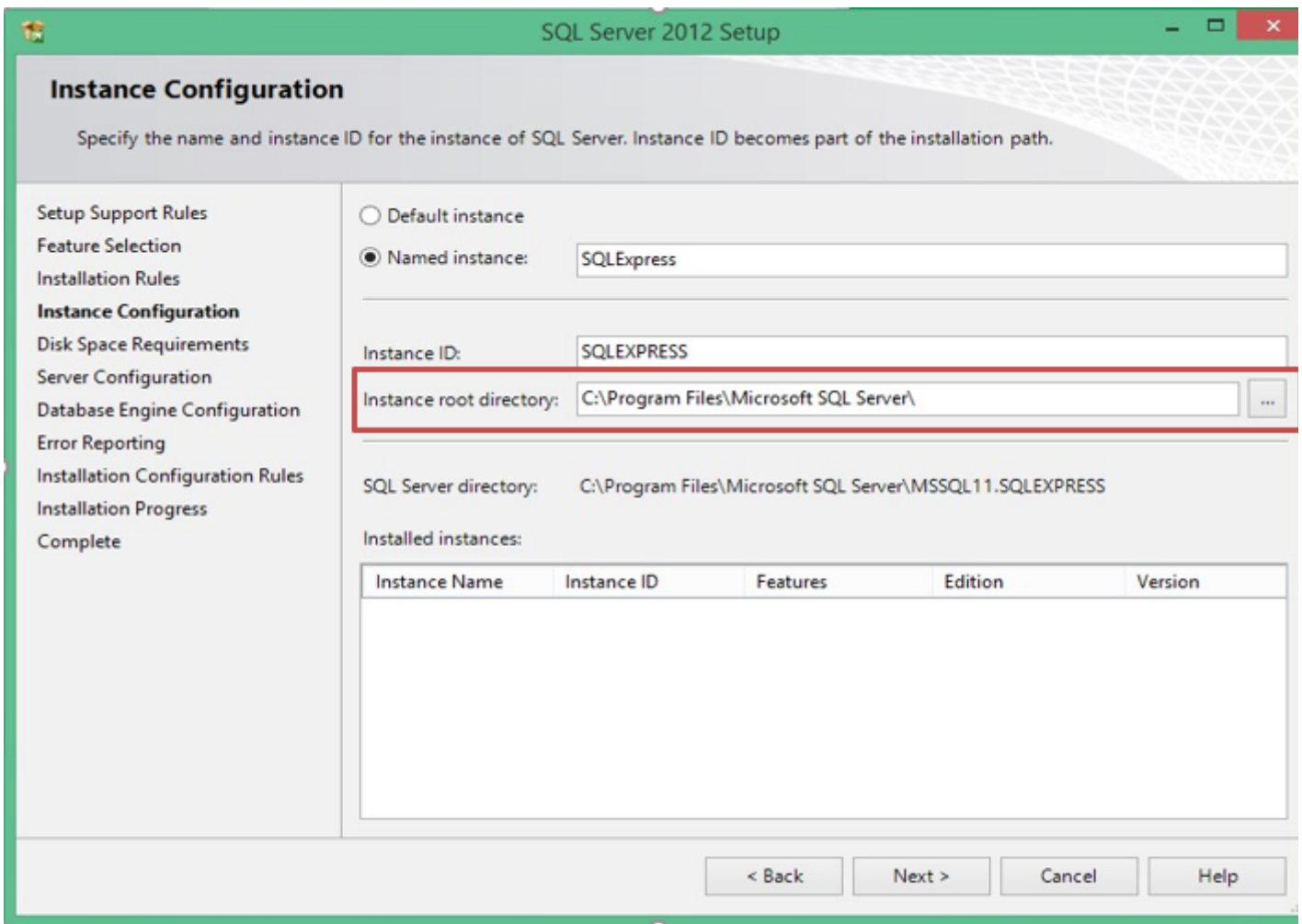


Microsoft SQL Server 2012 Instance Configuration

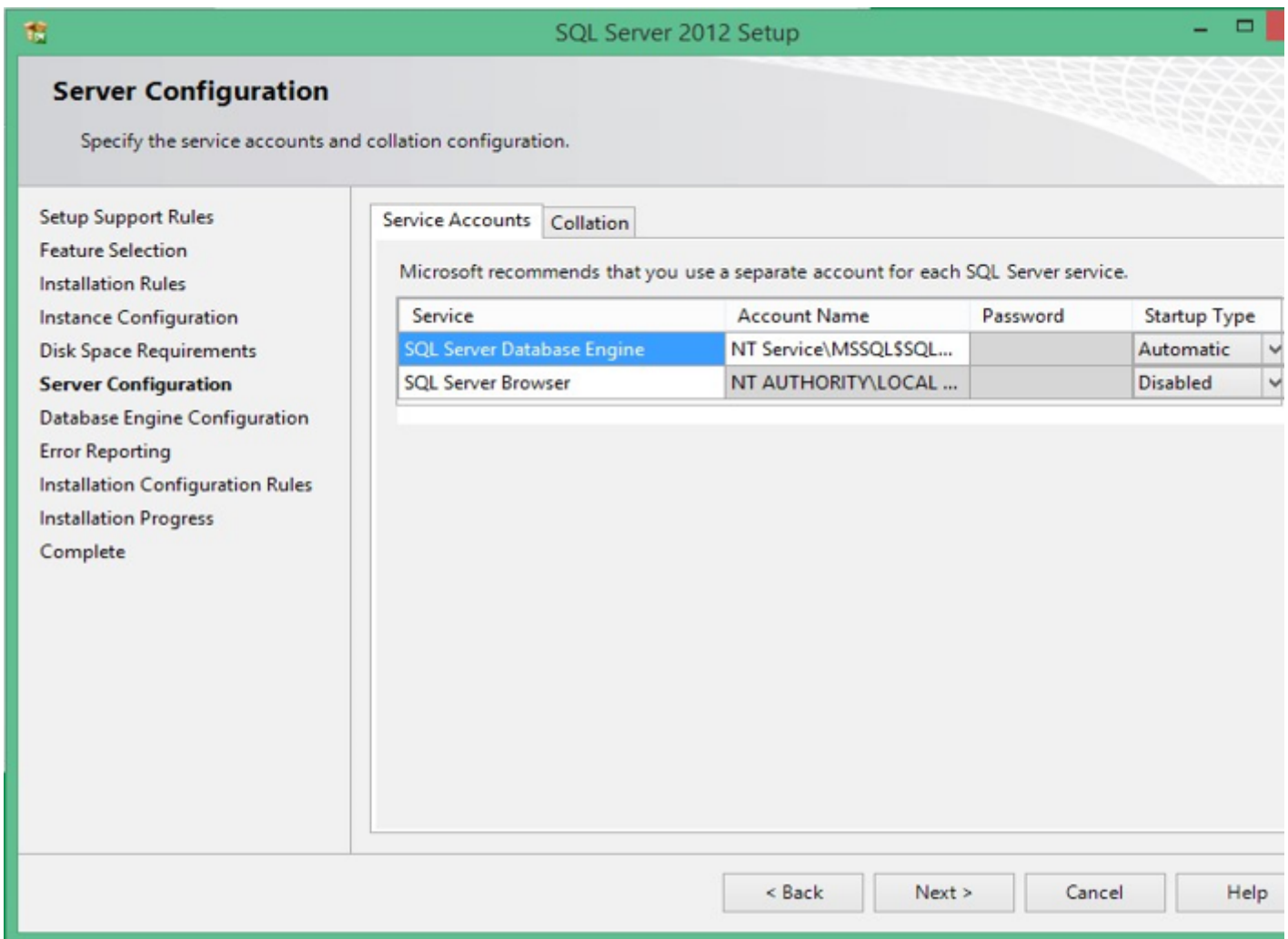
During this phase of the installation, you will be asked to setup an instance name for the SQL Server.

The Named Instance is the name we use to connect to the SQL Server.

The default "SQLExpress" can be used.



Microsoft SQL Server Express 2012 Server Configuration



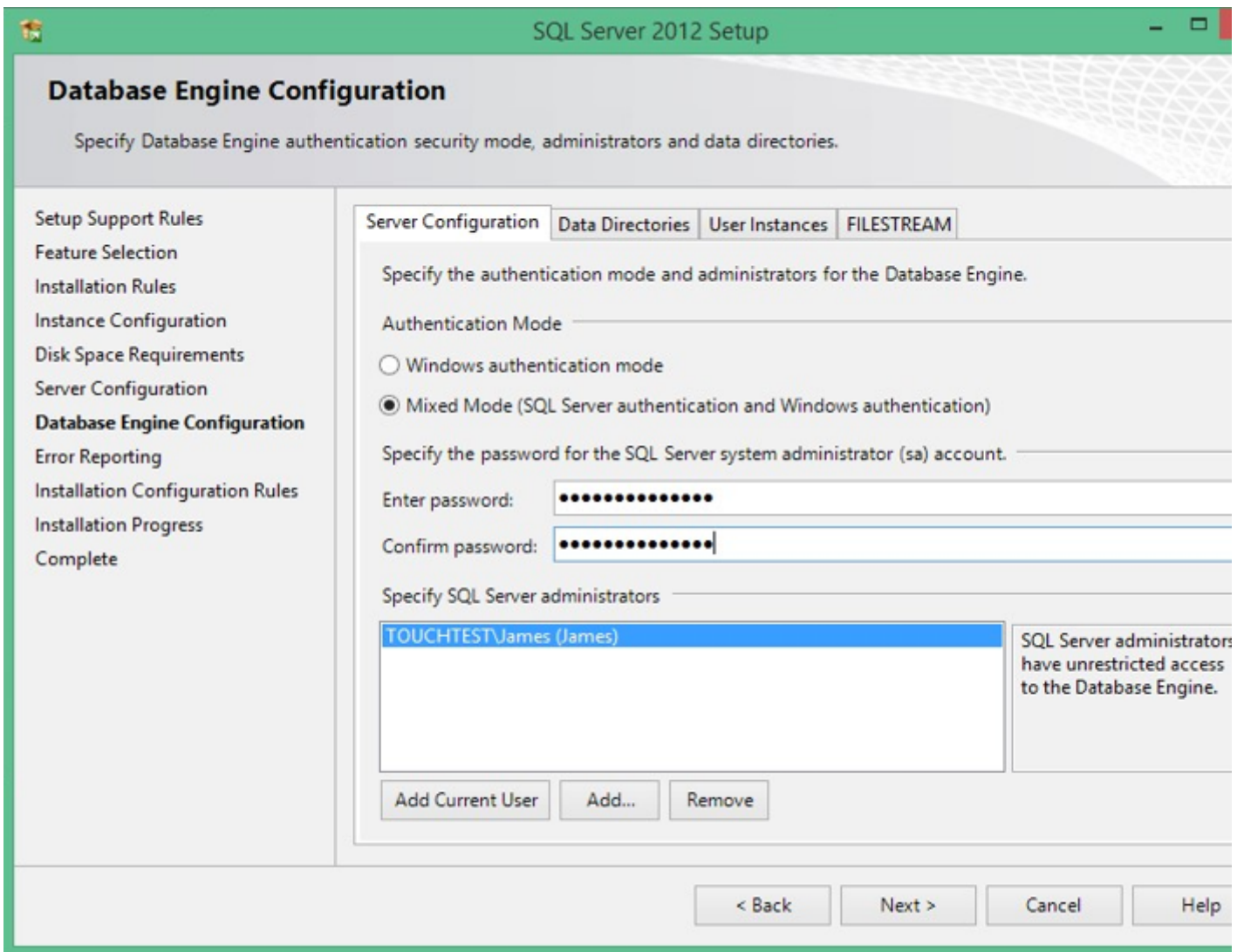
Make sure the Account Names and Startup types match the image above.

Microsoft SQL Server 2012 Database Engine Configuration

On this screen we need to make a few changes.

Set the Authentication Mode to

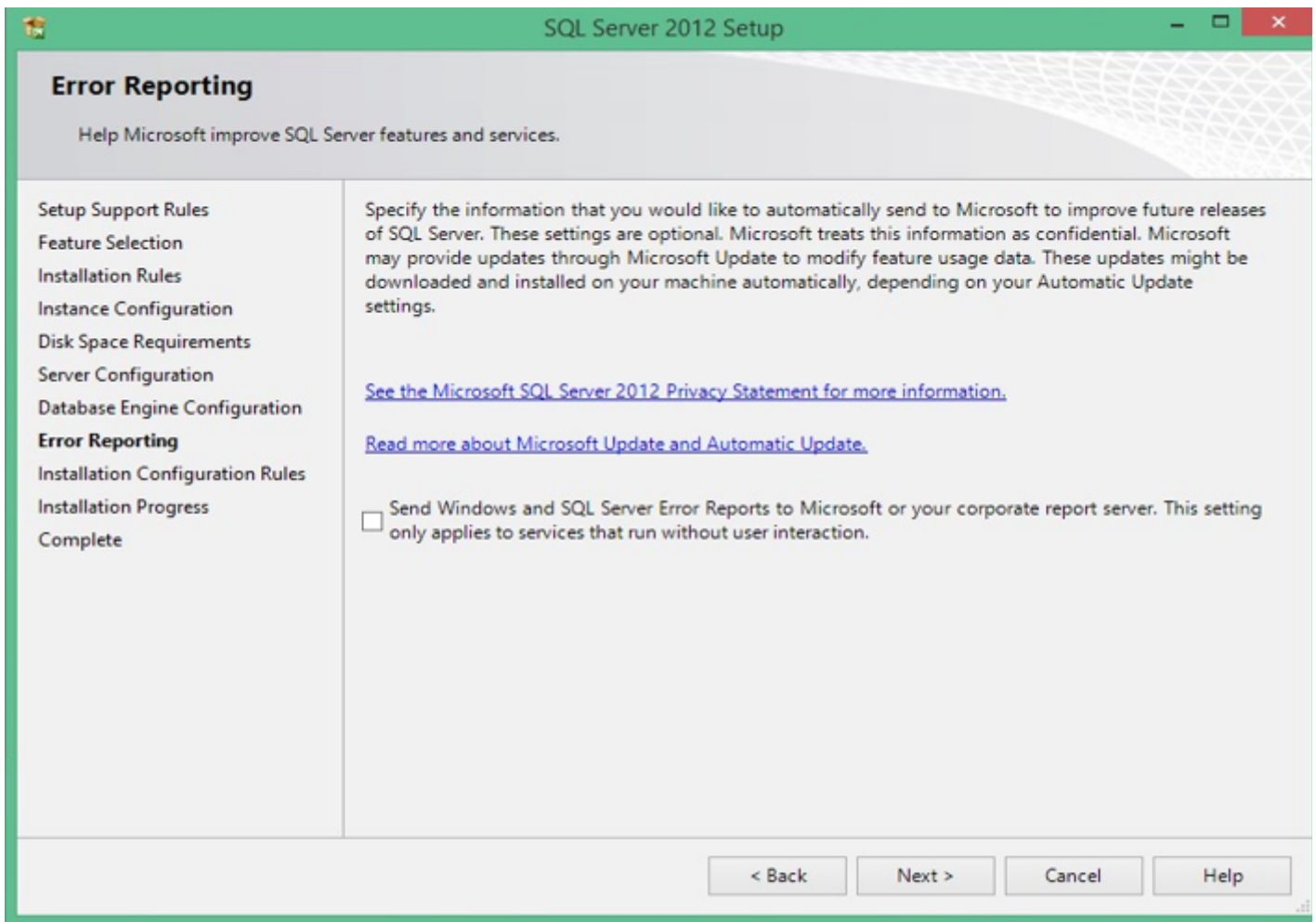
- Mixed Mode (SQL Server Authentication and Windows Authentication)
- Set the Password to McR0berts.1876 (Note: That is a zero)



Note: Do NOT add another user unless otherwise instructed by your supervisor.

Microsoft SQL Server Error Reporting

Do not select anything, click next



Installation Completed!

If everything went as expected, you should be presented with a “Complete” screen (as shown below) once on this screen, you can close the wizard and move on to the next step.

Complete

Your SQL Server 2012 installation completed successfully with product updates.

Setup Support Rules
Feature Selection
Installation Rules
Instance Configuration
Disk Space Requirements
Server Configuration
Database Engine Configuration
Error Reporting
Installation Configuration Rules
Installation Progress
Complete

Information about the Setup operation or possible next steps:

Feature	Status
✓ Management Tools - Basic	Succeeded
✓ Database Engine Services	Succeeded
✓ SQL Server Replication	Succeeded
✓ SQL Browser	Succeeded
✓ SQL Writer	Succeeded

Details:

Viewing Product Documentation for SQL Server

Only the components that you use to view and manage the documentation for been installed. By default, the Help Viewer component uses the online library. SQL Server, you can use the Help Library Manager component to download documents to your local computer. For more information, see [Use Microsoft Books Online for SQL Server](http://go.microsoft.com/fwlink/?LinkId=224683).

Summary log file has been saved to the following location:

C:\Program Files\Microsoft SQL Server\110\Setup Bootstrap\Log\20150710_104116\Summary_TouchTest_20150710_104116.txt

Clos

Downloading and Installing Microsoft SQL Management Studio

Configure Microsoft SQL Server

Configure Microsoft SQL Server 2012

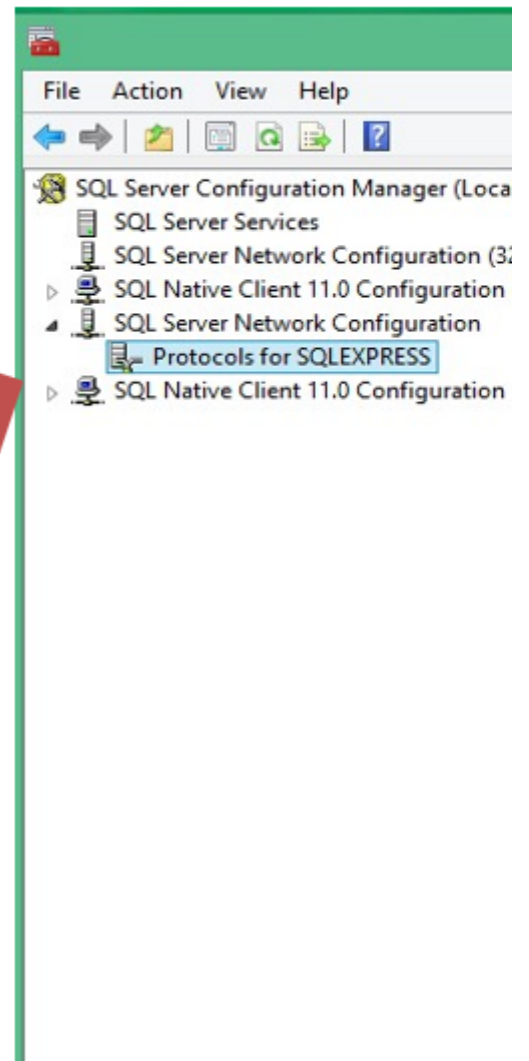
Microsoft SQL Server 2012 External Access

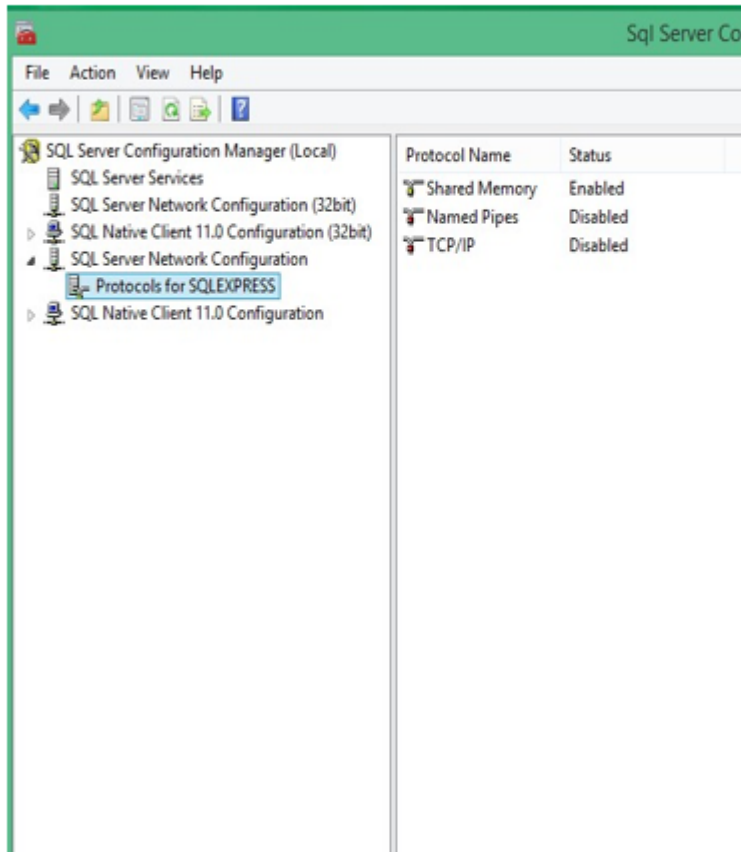
Once the server is installed and running, we will need to configure the server to allow the workstations to connect and retrieve data as needed, in order to do this we need to allow TCP/IP Access via port 1433.

First we need to open the SQL Server Configuration Manager

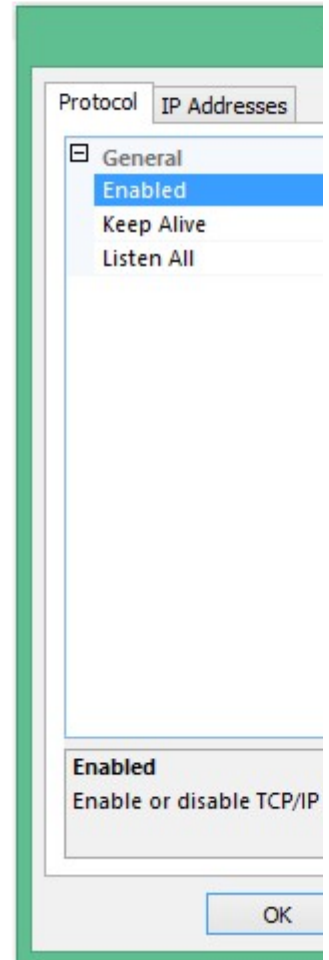
Click Start
Go to All Programs
Click Microsoft SQL Server 2012
Click Configuration Tools
Click SQL Server Configuration
Manager

You Will be Presented with a screen
like this.





Once you have the Configuration Manager open, click on the SQL Server Network Configuration Tab as shown in the screenshot above. Next, double click on TCP/IP and you should see the following dialog box.



The first thing we want to do here is set enabled to yes. Then click "Ip Addresses"

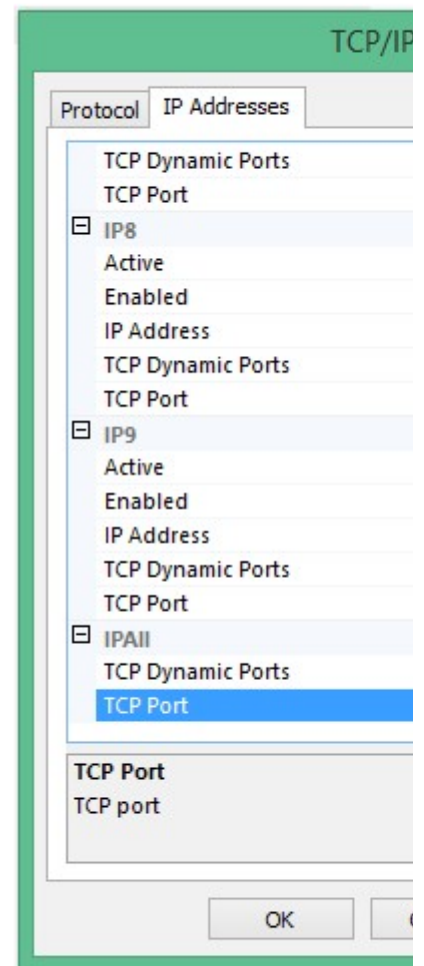
You will be presented with a list of ip addresses and their settings. Click the "-" (Minus) sign for all the ip addresses until only IPALL is left expanded

In this area we will set the TCP Ports to what is required for MSTWatch Workstation to communicate with the SQL Server.

TCP Dynamic Ports: Leave At default!
TCP Port: 1433

Note:

Once you Click "Ok" you will be told that the changes you made won't Take Effect Until the SQL Server is Restarted.. Click OK and Continue.

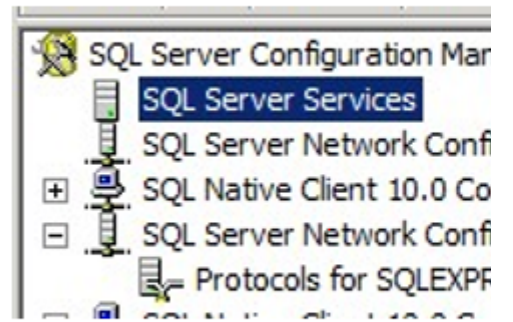
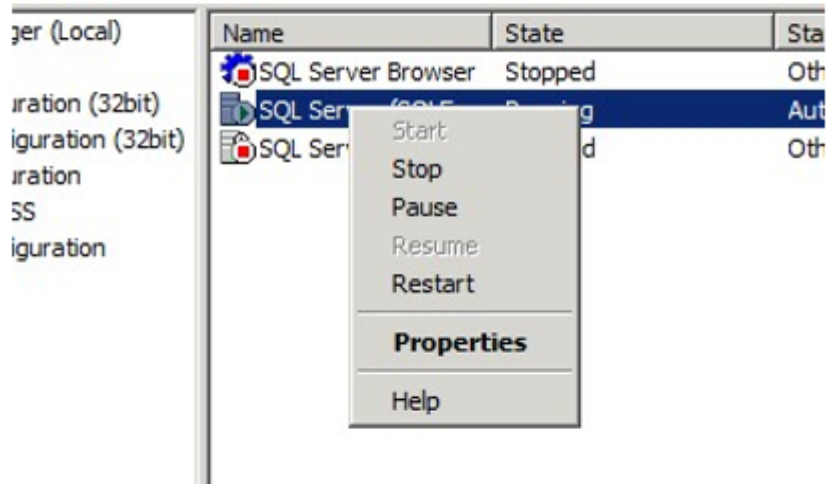


Restarting the Microsoft SQL Server 2012

After making the changes to the TCP/IP Ports and Settings, we need to restart the server. To do this follow the list of steps below.

Single left click on "SQL Server Services" (as seen in the image!)

Right click on SQL Server (SQLEXPRESS) — (on the right!) Single left click "Restart"



After the Service is Stopped
Can Close the Window
and Move to the Next Step