

Configure Microsoft SQL Server

Configure Microsoft SQL Server 2012

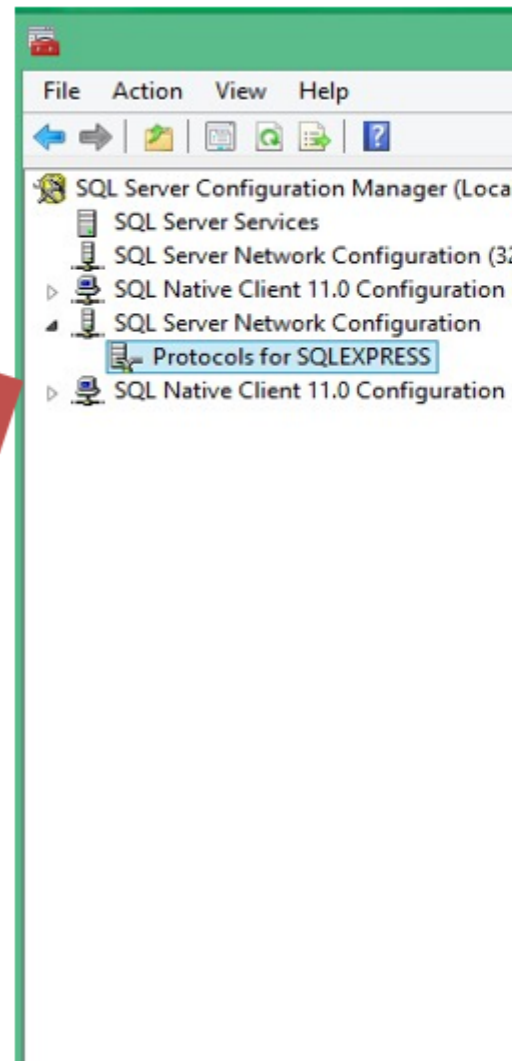
Microsoft SQL Server 2012 External Access

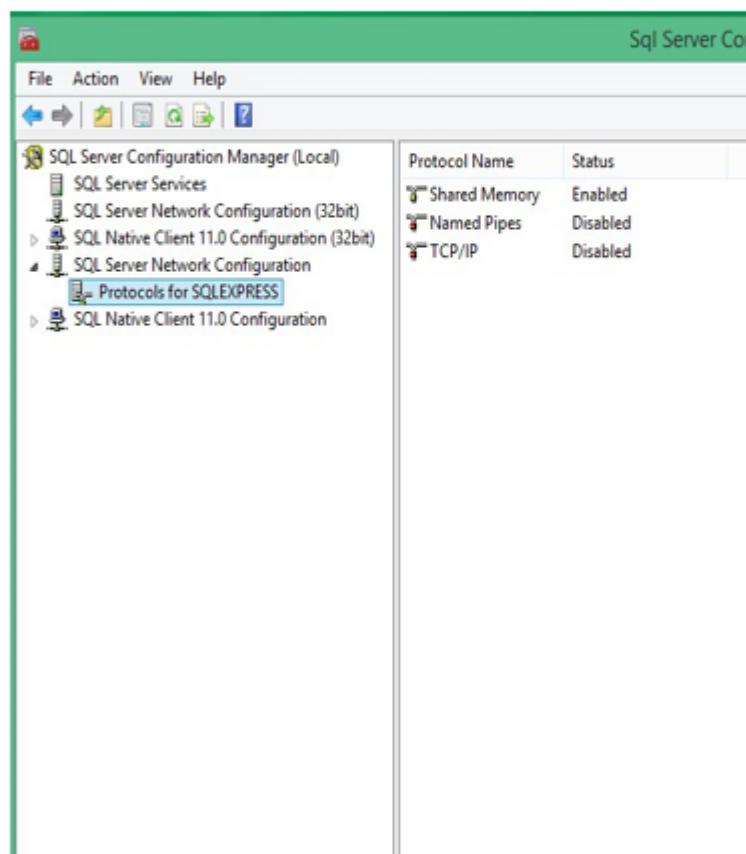
Once the server is installed and running, we will need to configure the server to allow the workstations to connect and retrieve data as needed, in order to do this we need to allow TCP/IP Access via port 1433.

First we need to open the SQL Server Configuration Manager

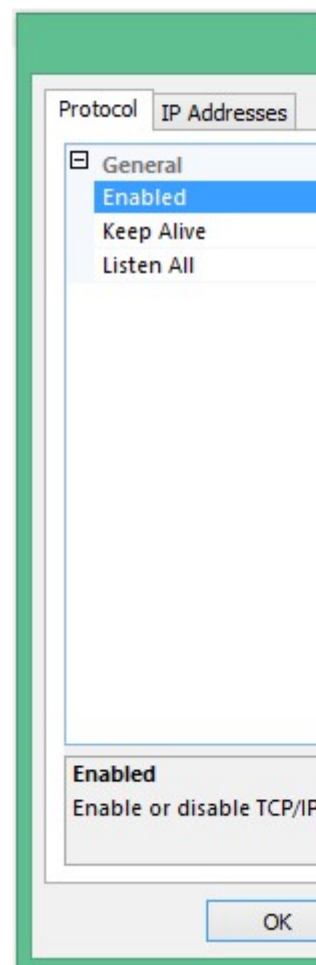
Click Start
Go to All Programs
Click Microsoft SQL Server 2012
Click Configuration Tools
Click SQL Server Configuration
Manager

You Will be Presented with a screen
like this.





Once you have the Configuration Manager open, click on the SQL Server Network Configuration Tab as shown below. Next, double click on TCP/IP and you should see the TCP/IP Configuration dialog box.



The first thing we want to do here is set enabled to yes. Then click "Ip Addresses"

You will be presented with a list of ip addresses and their settings. Click the "-" (Minus) sign for all the ip addresses until only IPALL is left expanded

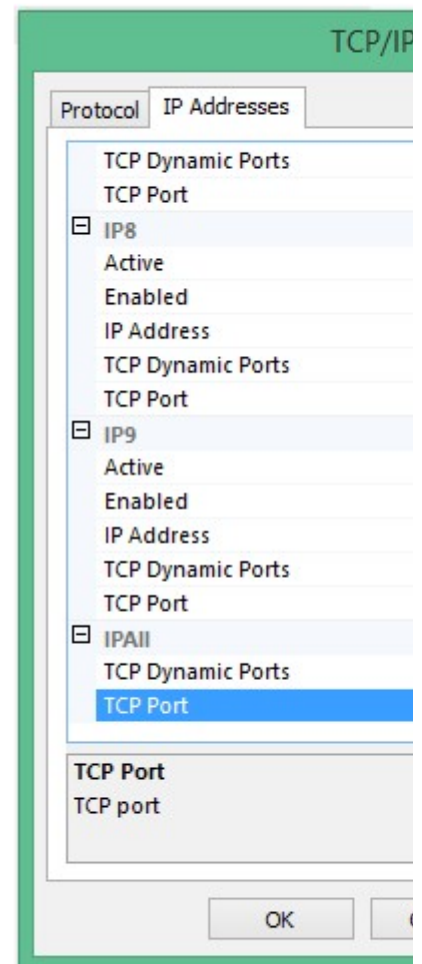
In this area we will set the TCP Ports to what is required for MSTWatch Workstation to communicate with the SQL Server.

TCP Dynamic Ports: Leave At default!

TCP Port: 1433

Note:

Once you Click “Ok” you will be told that the changes you made won’t Take Effect Until the SQL Server is Restarted.. Click OK and Continue.

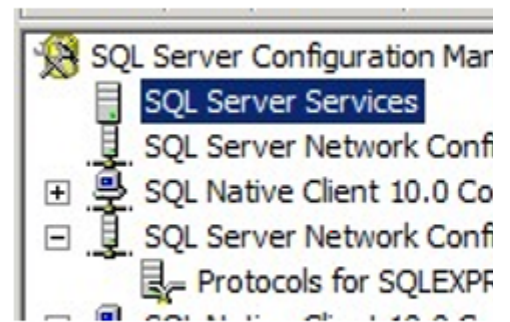
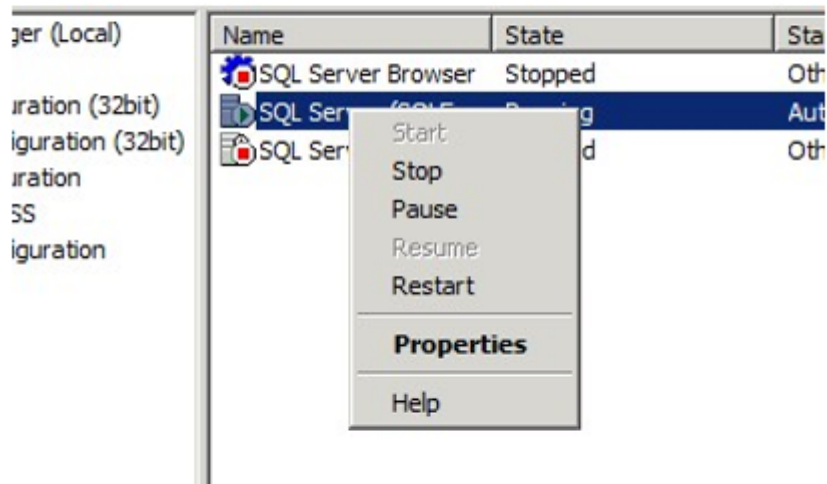


Restarting the Microsoft SQL Server 2012

After making the changes to the TCP/IP Ports and Settings, we need to restart the server. To do this follow the list of steps below.

Single left click on “SQL Server Services” (as seen in the image!)

Right click on SQL Server (SQLEXPRESS) — (on the right!) Single left click “Restart”



After the Service is Running, You Can Close the Configuration Manager and Move to the next step.

Revision #2

Created 3 March 2022 18:03:17 by Brad Davis

Updated 4 March 2022 02:34:30 by Sarah Davis