

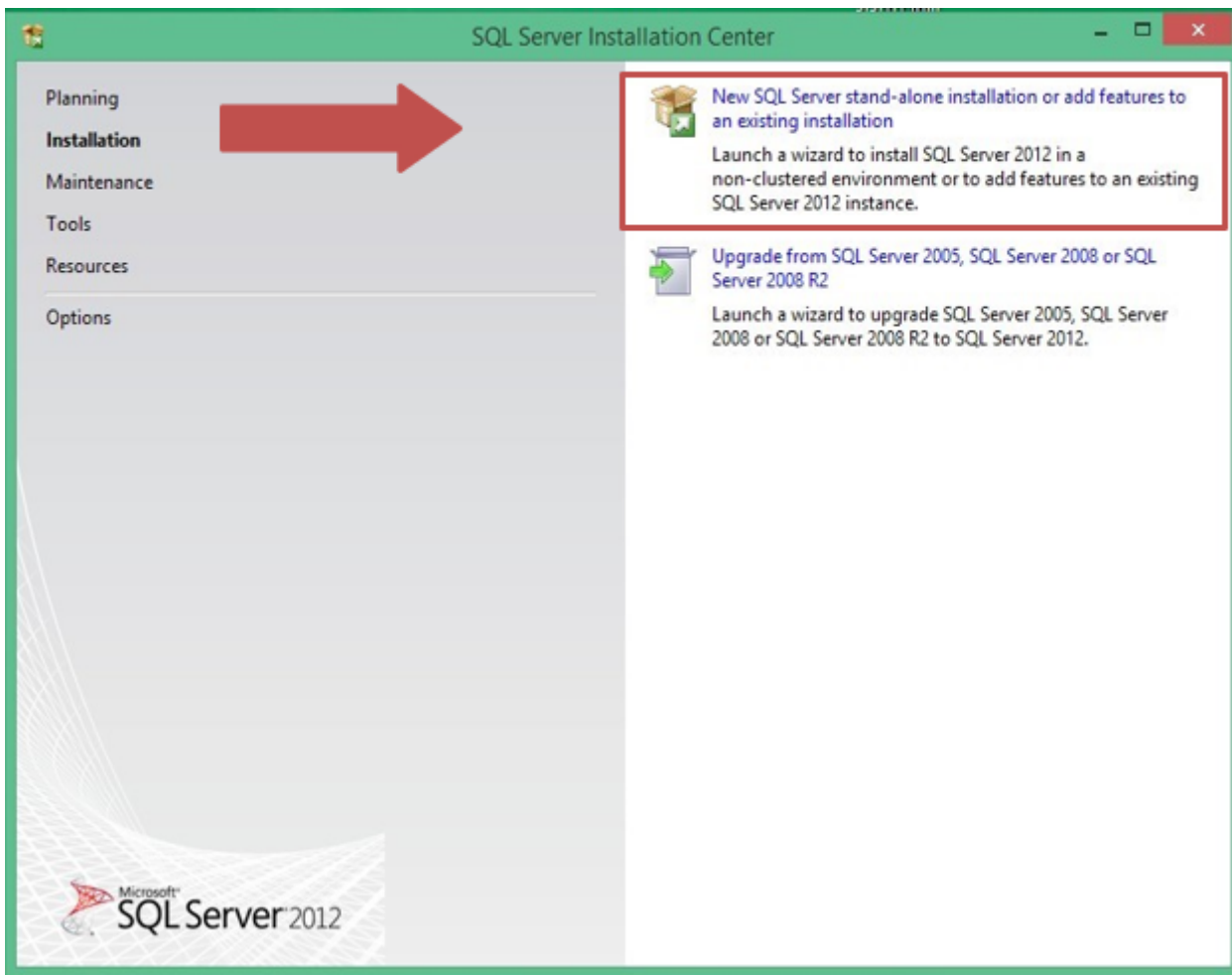
Downloading and Installing Microsoft SQL Server

Installing & Configuring Microsoft SQL Server Express 2012

After downloading the Microsoft SQL Server Express Installer Package run it by double clicking on it.

The installer package will begin to extract files from the package. Once that has completed you will be presented with a screen as seen below.

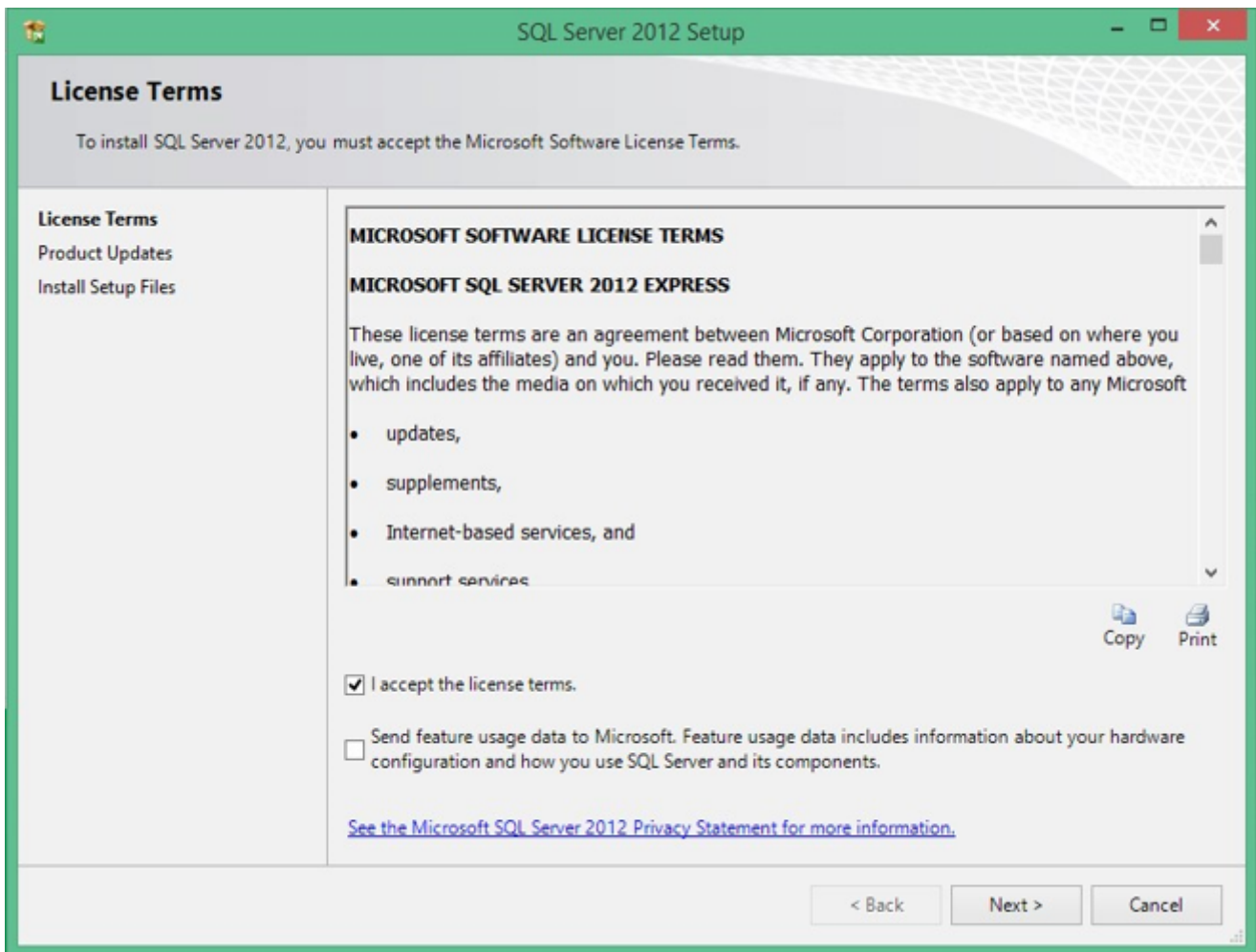
Click the indicated link below to begin the installation!



Accepting the License Terms for Microsoft SQL Server Express 2012

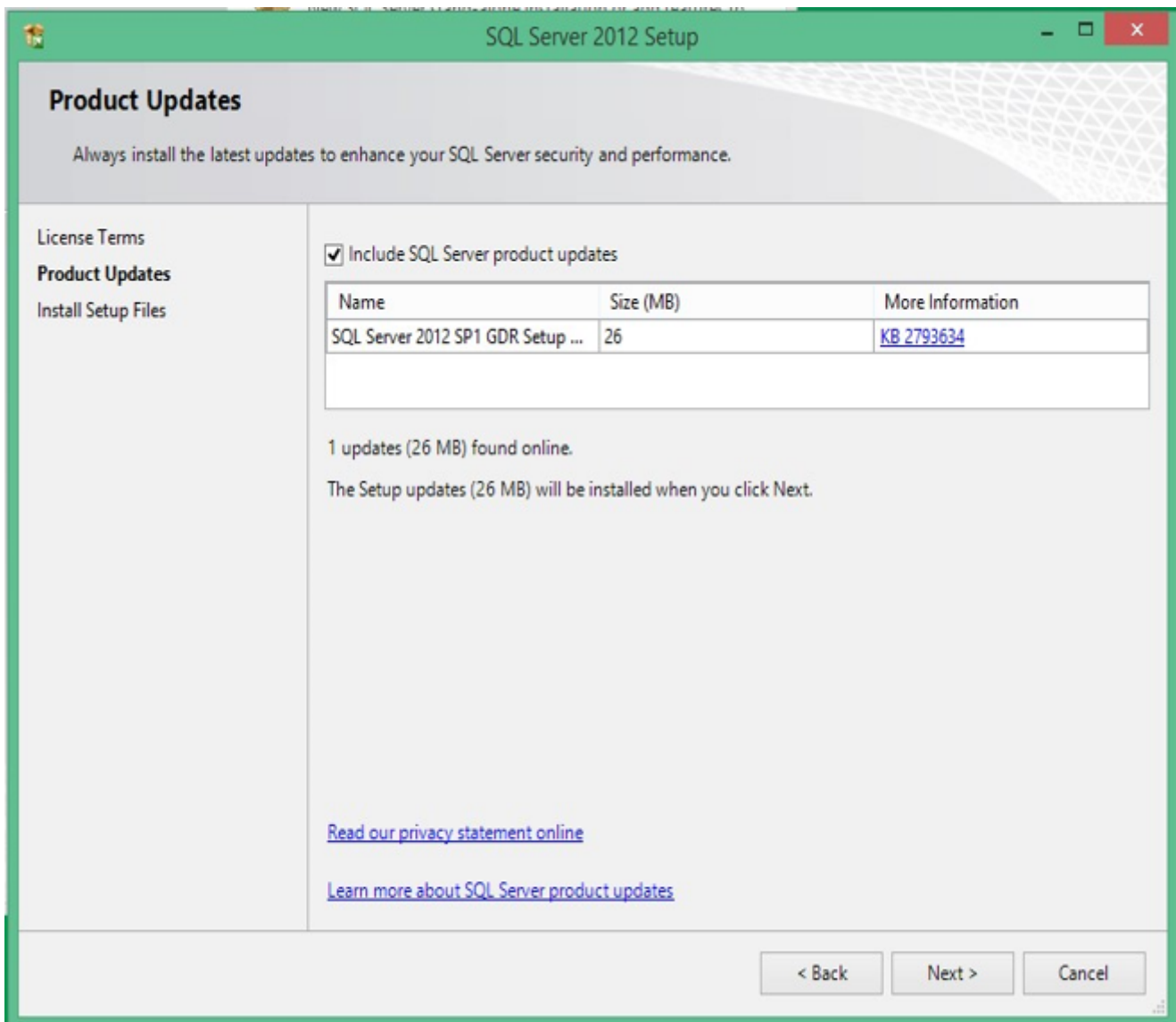
You will be asked to accept the License Terms. To complete this select the check box next to 'I accept the license terms.' and click next.

Note: Be sure to leave the box below that unchecked.



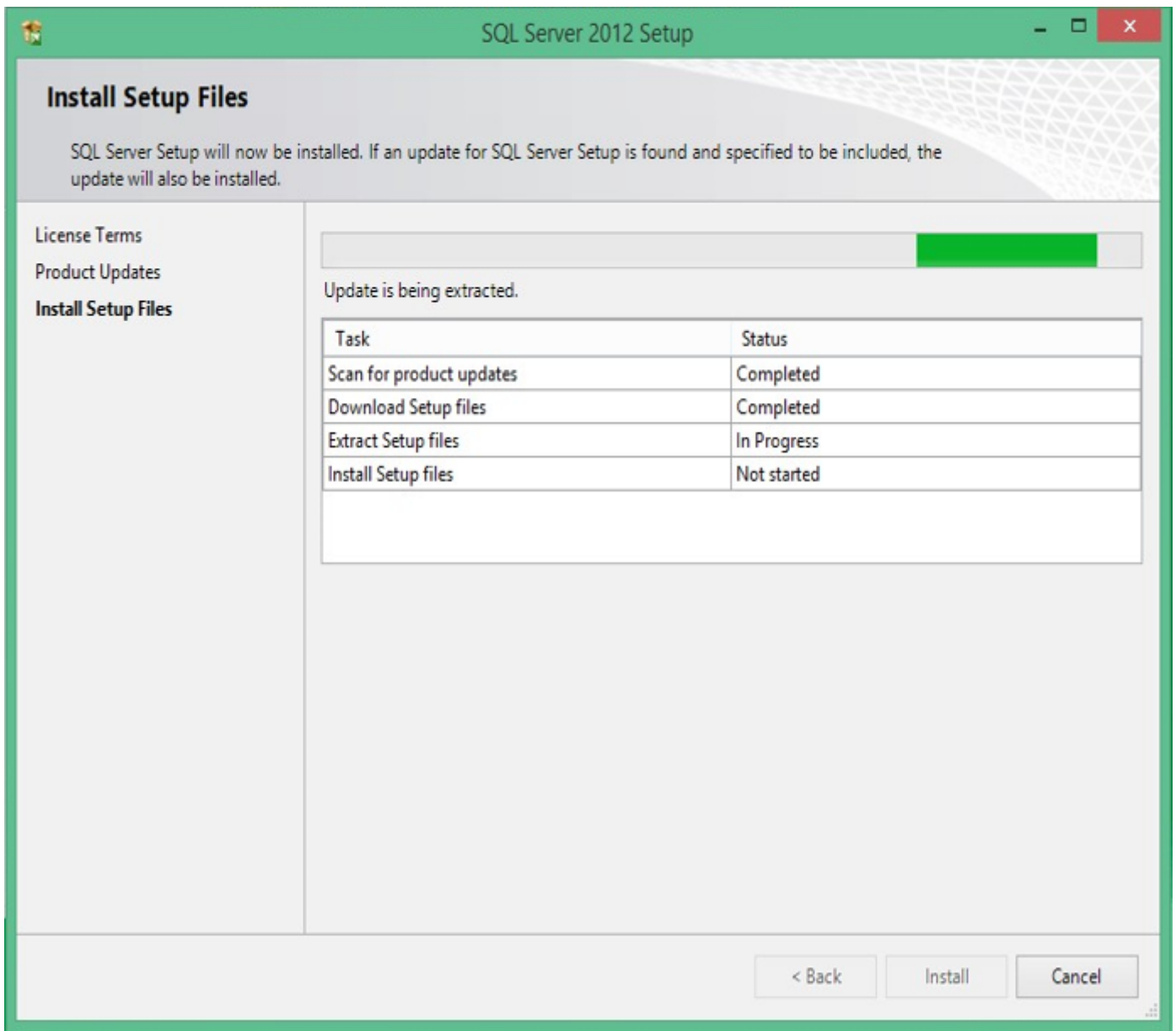
Setting up the Product Updates for Microsoft SQL Server Express 2012

Select the check box next to 'Include SQL Server product updates', then click next.



The installation of the Setup Files for Microsoft SQL Server Express 2012

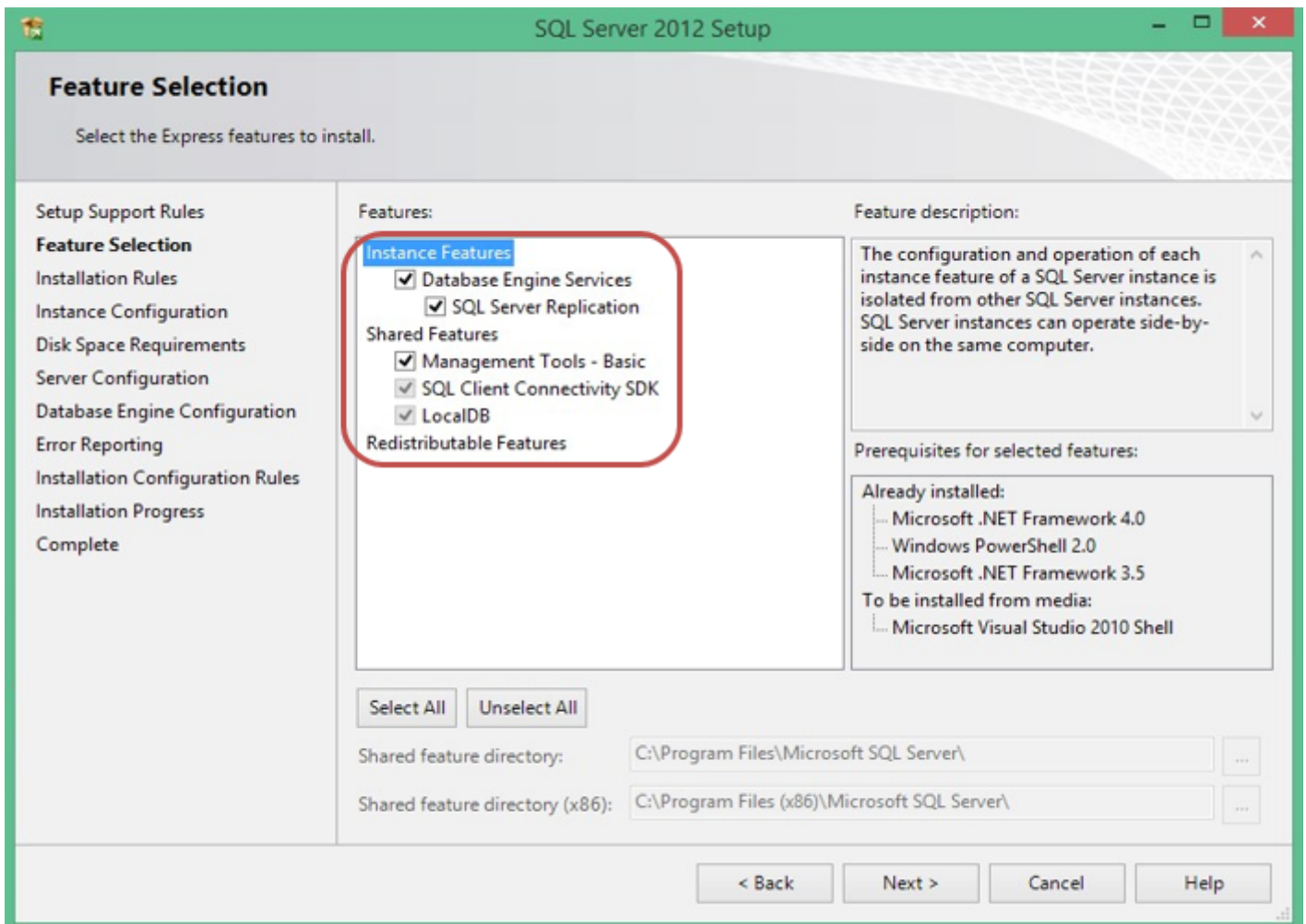
Wait for the installation process to complete and click next.



Microsoft SQL Server Express 2012 Feature Selection

During the SQL installation process, you will be asked to select features for the SQL Server.

Be sure to check ALL features as shown in the screen shot.



Microsoft SQL Server 2012 Instance Configuration

During this phase of the installation, you will be asked to setup an instance name for the SQL Server.

The Named Instance is the name we use to connect to the SQL Server.

The default "SQLExpress" can be used.

SQL Server 2012 Setup

Instance Configuration

Specify the name and instance ID for the instance of SQL Server. Instance ID becomes part of the installation path.

Setup Support Rules
Feature Selection
Installation Rules
Instance Configuration
Disk Space Requirements
Server Configuration
Database Engine Configuration
Error Reporting
Installation Configuration Rules
Installation Progress
Complete

☐ Default instance

☒ Named instance:

Instance ID:

Instance root directory: ...

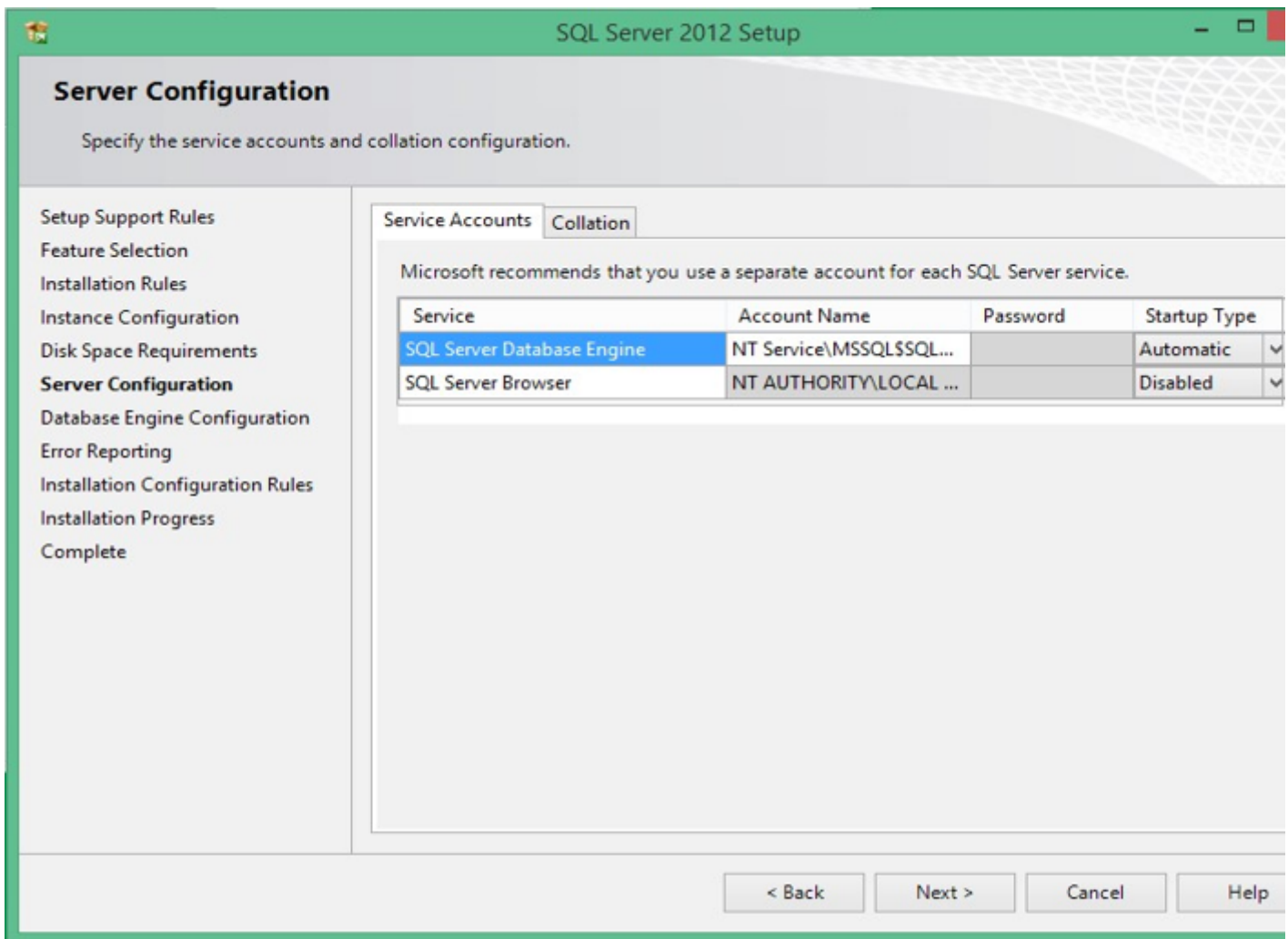
SQL Server directory: C:\Program Files\Microsoft SQL Server\MSSQL11.SQLEXPRESS

Installed instances:

Instance Name	Instance ID	Features	Edition	Version
---------------	-------------	----------	---------	---------

< Back Next > Cancel Help

Microsoft SQL Server Express 2012 Server Configuration



Make sure the Account Names and Startup types match the image above.

Microsoft SQL Server 2012 Database Engine Configuration

On this screen we need to make a few changes.

Set the Authentication Mode to

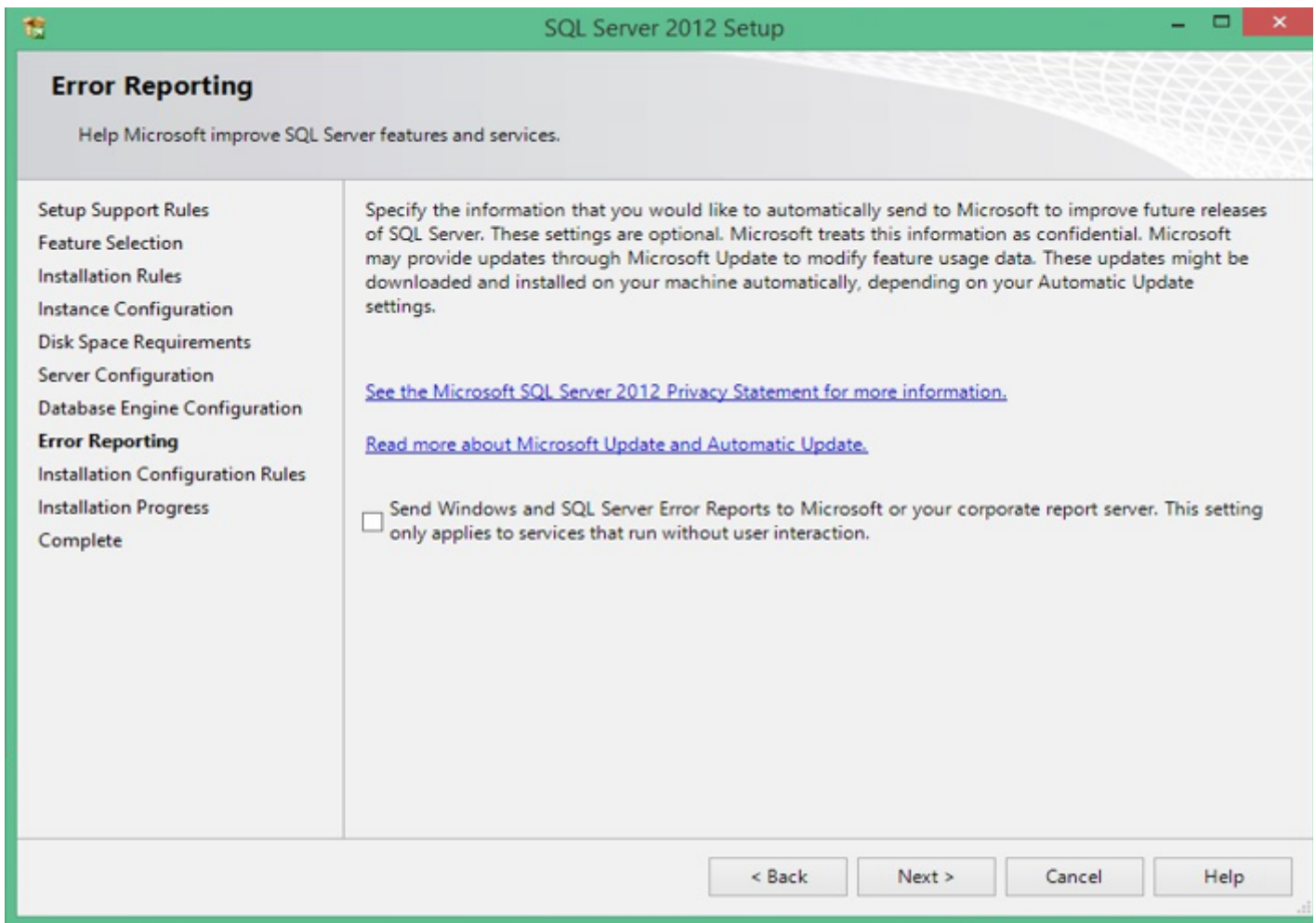
- Mixed Mode (SQL Server Authentication and Windows Authentication)
- Set the Password to McR0berts.1876 (Note: That is a zero)

The screenshot shows the 'Database Engine Configuration' window in the SQL Server 2012 Setup. The window has a green title bar and a sidebar on the left with the following options: Setup Support Rules, Feature Selection, Installation Rules, Instance Configuration, Disk Space Requirements, Server Configuration, **Database Engine Configuration**, Error Reporting, Installation Configuration Rules, Installation Progress, and Complete. The main area has four tabs: Server Configuration (selected), Data Directories, User Instances, and FILESTREAM. Below the tabs, the text reads: 'Specify the authentication mode and administrators for the Database Engine.' There are two radio buttons for 'Authentication Mode': 'Windows authentication mode' (unselected) and 'Mixed Mode (SQL Server authentication and Windows authentication)' (selected). Below this, it says 'Specify the password for the SQL Server system administrator (sa) account.' There are two password fields: 'Enter password:' and 'Confirm password:', both containing masked characters. Below the password fields, it says 'Specify SQL Server administrators' followed by a list box containing 'TOUCHTEST\James (James)'. To the right of the list box, a note states: 'SQL Server administrators have unrestricted access to the Database Engine.' At the bottom of the list box area are three buttons: 'Add Current User', 'Add...', and 'Remove'. At the very bottom of the window are four buttons: '< Back', 'Next >', 'Cancel', and 'Help'.

Note: Do NOT add another user unless otherwise instructed by your supervisor.

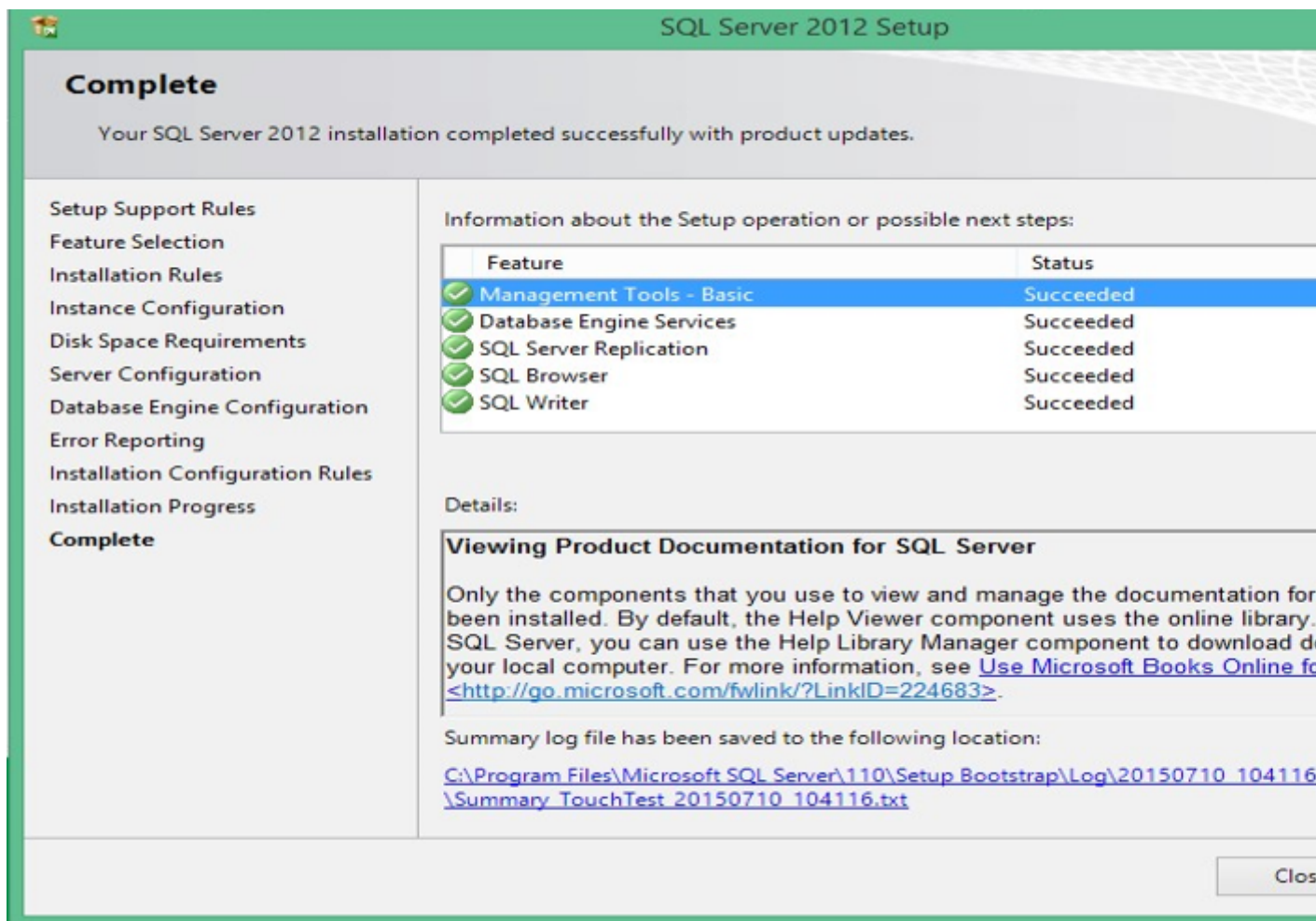
Microsoft SQL Server Error Reporting

Do not select anything, click next



Installation Completed!

If everything went as expected, you should be presented with a “Complete” screen (as shown below) once on this screen, you can close the wizard and move on to the next step.



Revision #12

Created 3 March 2022 18:02:11 by Brad Davis

Updated 4 March 2022 03:02:07 by Sarah Davis