

Install

- [Deployment Without Docker](#)
- [Deployment using Docker Desktop / Docker CLI](#)
- [Microsoft SQL Server Deployment Guide](#)
- [Microsoft SQL Management Studio Deployment Guide](#)
- [RabbitMQ Deployment Guide](#)
- [Deploying the Relay Controller without Docker](#)

Deployment Without Docker

Required Software:

- Windows Server 2016 or newer (Windows Server 2019 preferred)
- .NET 6 Runtime

Required Services:

- Microsoft SQL Server 2019 or newer
- RabbitMQ 3.9x

Optional Software/Services:

- Redis
- InfluxDb

This guide assumes you are working with a new install of windows server and the client has not provided any of the services needed by MyChild6

File Install

Start by installing the following software in the order they are listed below

1. Chocolatey - [Install Guide](#)
2. Microsoft SQL Server - [Install Guide](#)
3. SQL Management studio - [Install Guide](#)
4. RabbitMQ - [Install Guide](#)
5. .NET 6 Runtime ([download here](#))

Once all of the software dependencies are deployed, you can then start deploying the MyChild6 software.

1. Download the deployment zip file to the server (This can be downloaded from Gitlab currently)
2. Unzip the deployment zip file to c:\temp
3. Create the main program directory C:\Program Files\McRoberts Technologies\MyChild6_Web
4. Create the main directory for the McLink Agent (If required) C:\Program Files\McRoberts Technologies\MyChild6_McLinkAgent
5. Copy all files from the unzipped deployment file to the folder created in step 3

At this point the MyChild6 software is now deployed.

The next step is to install the MyChild6 Services. Follow the steps below.

Service Install

Inside the main service folder (IE: C:\path\to\MyChild6_Web\helper_scripts\installers for MyChild6) there should be a file named "install-service.ps1" this is a PowerShell script that should install the MyChild6 Web Service, to run it you will need to move the file to the same folder as the MSTWatch.Web.exe file (IE: the folder created in Step 3 above), once completed you can then double click on the file using windows explorer, or you can run the script from an Elevated PowerShell (IE: Run as Administrator).

The McLink Agent service should also have an installer file name "install-mclinkagent-service.ps1" that behaves exactly the same way as the MyChild6 Web Installer, you will find it in the C:\path\from\step\4\helper_scripts\installers copy it to the path from step 4 and execute it by double clicking on it, or running it from an Elevated PowerShell (IE: Run as Administrator).

Now you have successfully deployed the MyChild6 software to your server.

The next step is to configure and start the services. Please visit the [Configuration guide](#) for more information

Deployment using Docker Desktop / Docker CLI

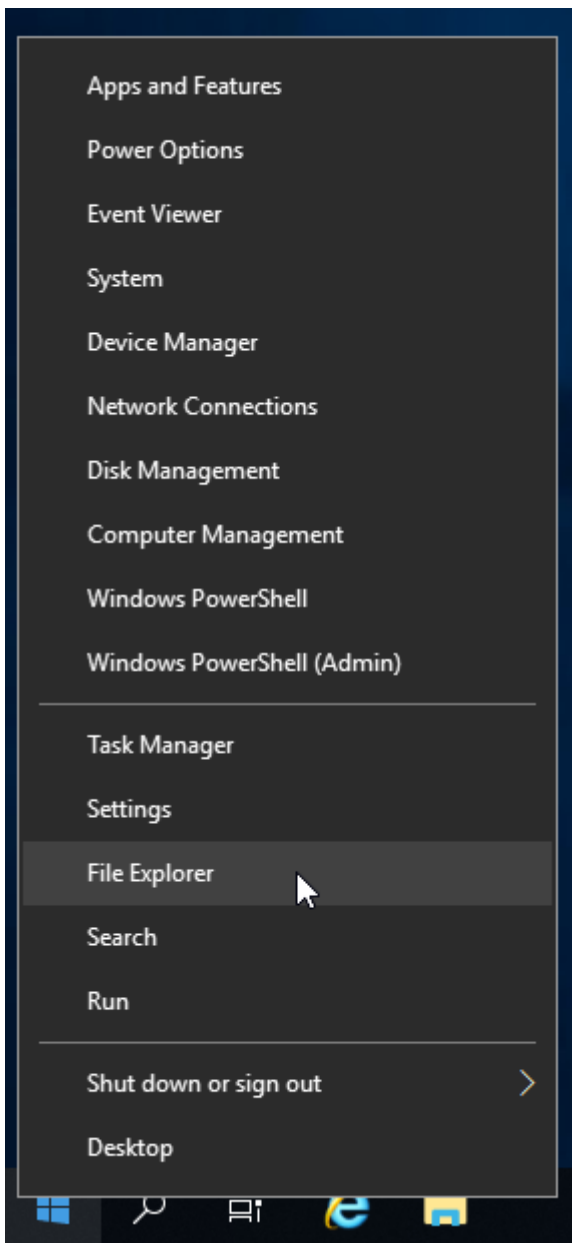
Microsoft SQL Server Deployment Guide

Finding the Installer

To begin this installation please navigate to the File Explorer on the server in question by either selecting the File Explorer icon on the Task Bar as shown below:

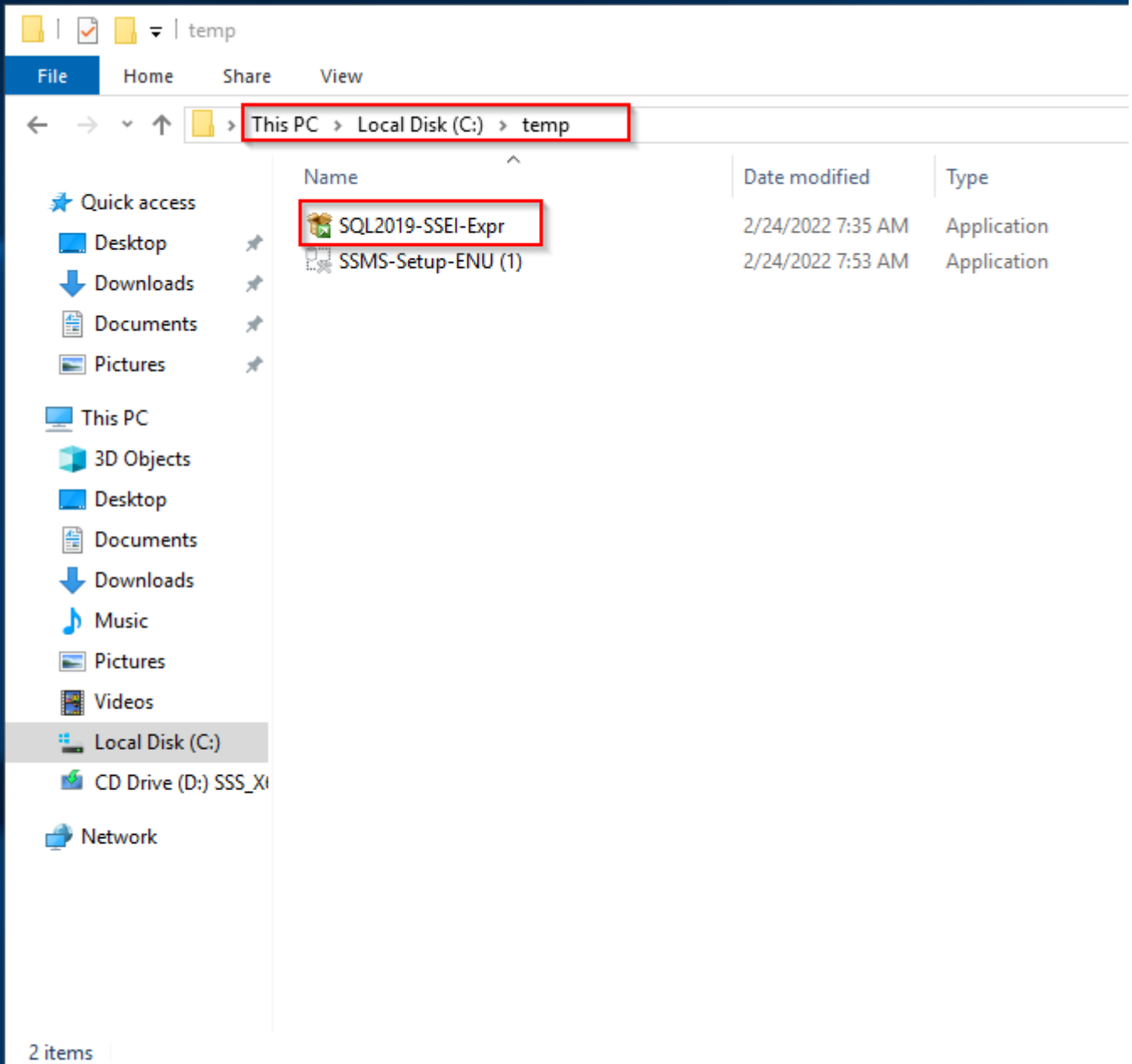


Or by right clicking the Start Menu (Windows icon) on the task bar as shown below:



You will then need to navigate to This PC (Found in the Quick Access Menu on the left in the File Explorer) > Local Disk (C:) >temp

Or C:\temp.



You will then select the SQL2019-SSEI-Expr application and double click it.

Selecting the Installation Type

Please select the Basic installation option.

SQL Server 2019

Express Edition

Select an installation type:

Basic

Select Basic installation type to install the SQL Server Database Engine feature with default configuration.



Custom

Select Custom installation type to step through the SQL Server installation wizard and choose what you want to install. This installation type is detailed and takes longer than running the Basic install.

Download M

Download SQL Server now and install them on your machine of your choice.

SQL Server transmits information about your installation experience, as well as other usage and performance data, to Microsoft to improve the product. To learn more about data processing and privacy controls, and to turn off the collection of this information after installation, see [documentation](#).

Accepting the Server License Terms

Accept the Microsoft SQL Server License Terms by selecting Accept at the bottom.

SQL Server 2019 Express Edition

Microsoft SQL Server License Terms

MICROSOFT SOFTWARE LICENSE TERMS

MICROSOFT SQL SERVER 2019 EXPRESS

These license terms are an agreement between you and Microsoft Corporation (or one of its affiliates). They apply to the software named above and any Microsoft services or software updates (except to the extent such services or updates are accompanied by new or additional terms, in which case those different terms apply prospectively and do not affect Microsoft's rights relating to pre-updated software or services). **IF YOU COMPLY WITH THESE LICENSE TERMS, YOU WILL HAVE THE RIGHTS BELOW. BY USING THE SOFTWARE, YOU ACCEPT THESE TERMS. IF YOU DO NOT ACCEPT THESE TERMS, DO NOT USE THE SOFTWARE.**

IMPORTANT NOTICE: AUTOMATIC UPDATES TO PREVIOUS VERSIONS OF SQL SERVER. If this software is installed on servers or devices running any supported editions of SQL Server prior to SQL Server 2019 (or components of such editions), this software will automatically update and replace certain files or features within those editions with files or features from this software. This feature cannot be switched off. Removal of these files may cause errors in the software and the files may not be recoverable. By installing this software on a server or device that is running such editions, you acknowledge that you accept these updates in all such editions and copies of SQL Server (including components of any of them) running on that server or device.

- 1. INSTALLATION AND USE RIGHTS.** You may install and use any number of copies of the software on any number of devices, including third party shared devices.

By clicking the "Accept" button, I acknowledge that I accept the License Terms and [Privacy Statement](#)

< Previous

Selecting the Installation Location

Unless otherwise instructed by your supervisor allow the default installation location to be used and select Install.

SQL Server 2019

Express Edition

Specify SQL Server install location

INSTALL LOCATION

C:\Program Files\Microsoft SQL Server



Browse

MINIMUM FREE SPACE

6578 MB

DOWNLOAD SIZE

266 MB

Close

< Previous

The Installation

The installer will then download the files needed for installation.

SQL Server 2019

Express Edition

Downloading install package...



Extracting rules engine...

SQL Server 2019 is also available for Linux

To obtain the SQL Server 2019 Linux images, including Containers, please see here (<https://aka.ms/sqlservercontainers>).

Pause

After downloading the installation files the installation will begin.

NOTE: This could take several minutes.

SQL Server 2019

Express Edition

Download successful!

Installing...

Installing SQL Server... Running Action: Install_SqlSupport_Cpu64_Action

Getting Started with SQL Server

Thank you for installing Microsoft SQL Server. If you are connecting to SQL Server from a remote machine, then you need to complete prerequisites mentioned in the "Before you get started" file located in the Resources folder.

Pause

Finishing the Installation

Once the installation is complete Close the installer.

SQL Server 2019

Express Edition

Installation has completed successfully!

INSTANCE NAME

SQLEXPRESS

SQL ADMINISTRATORS

WIN-DGGK1T42OEQ\Administrator

FEATURES INSTALLED

SQLENGINE

VERSION

15.0.2000.5, RTM

CONNECTION STRING

Server=localhost\SQLEXPRESS;Database=master;Trusted_Connection=

SQL SERVER INSTALL LOG FOLDER


C:\Program Files\Microsoft SQL Server\150\Setup Bootstrap\Log\20

INSTALLATION MEDIA FOLDER

C:\SQL2019\Express_ENU

INSTALLATION RESOURCES FOLDER

C:\Program Files\Microsoft SQL Server\150\SSEI\Resources

 Connect Now

Customize

Install SSMS

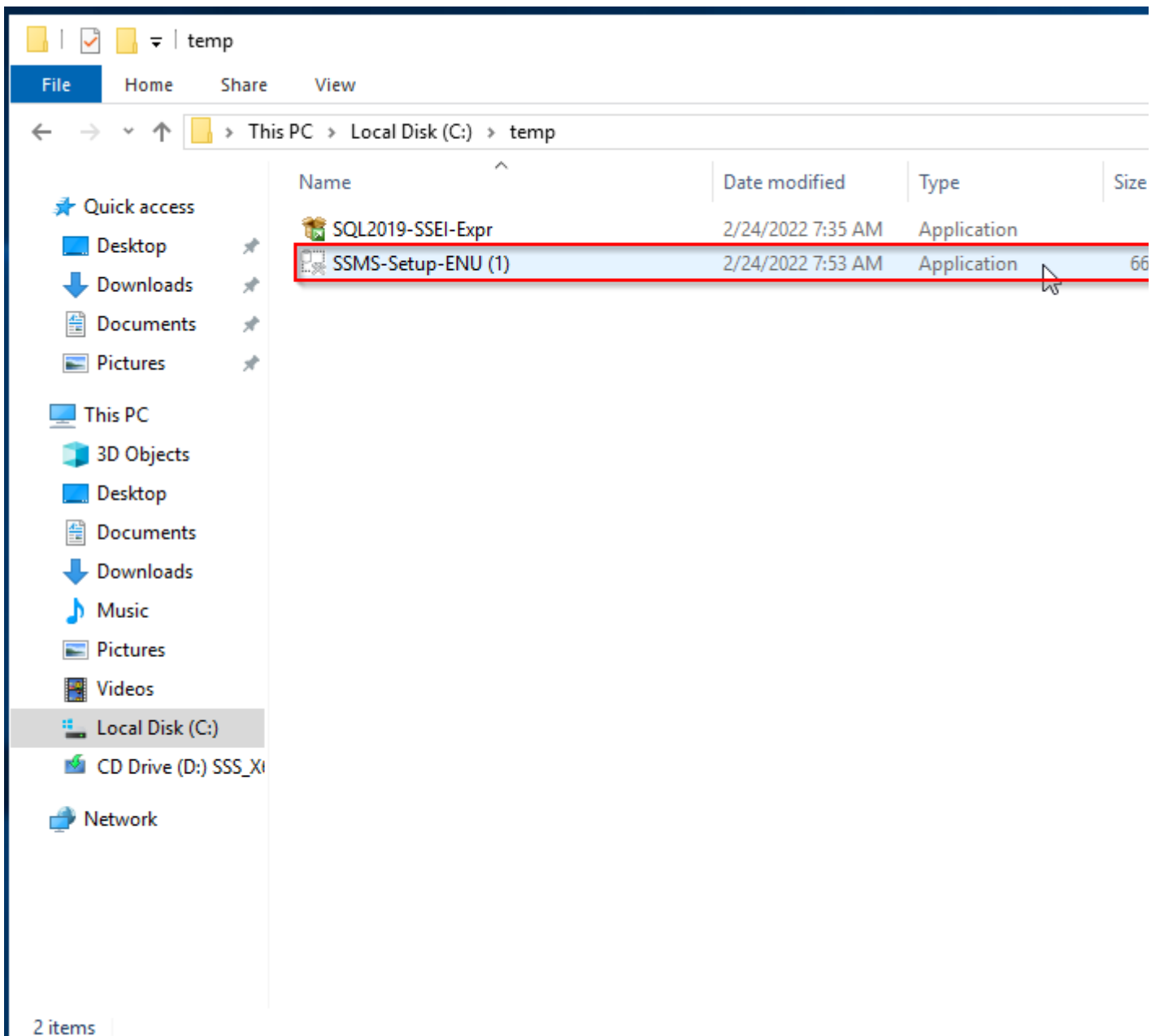
Microsoft SQL Management Studio Deployment Guide

Finding the Installer

To begin this installation please navigate to the File Explorer on the server in question by either selecting the File Explorer icon on the Task Bar as shown below:



Or by right clicking the Start Menu (Windows icon) on the task bar as shown below:



You will then need to select the SMSS-Setup-ENU application and double click it.

Selecting the Installation Location

Unless other wise instructed by your supervisor, install in the default location.



RELEASE 18.10

Microsoft SQL Server Management Studio with Azure Data Studio

Welcome. Click "Install" to begin.

Location:

C:\Program Files (x86)\Microsoft SQL Server Management Studio 18

Change

By clicking the "Install" button, I acknowledge that I accept the [Privacy Statement](#) and the License Terms for [SQL Server Management Studio](#) and [Azure Data Studio](#)

SQL Server Management Studio transmits information about your installation experience, as well as other usage and performance data, to Microsoft to help improve the product. To learn more about data processing and privacy controls, and to turn off the collection of this information after installation, see the [documentation](#)

Install

Close

Once the intended installation location has been selected select Install.

The Installation



RELEASE 18.10

Microsoft SQL Server Management Studio with Azure Data Studio

Loading packages. Please wait...



Cancel

The installation has two phases, loading the packages and installing the packages.



RELEASE 18.10

Microsoft SQL Server Management Studio with Azure Data Studio

Package Progress



Microsoft OLE DB Driver for SQL Server

Overall Progress



Cancel

NOTE: This may take a few minutes.

Finishing the Installation

Once the installation is finished, you will need to restart the server which can be done through the installer.



RELEASE 18.10

Microsoft SQL Server Management Studio with Azure Data Studio

Restart required in order to complete setup.

All specified components have been installed successfully.

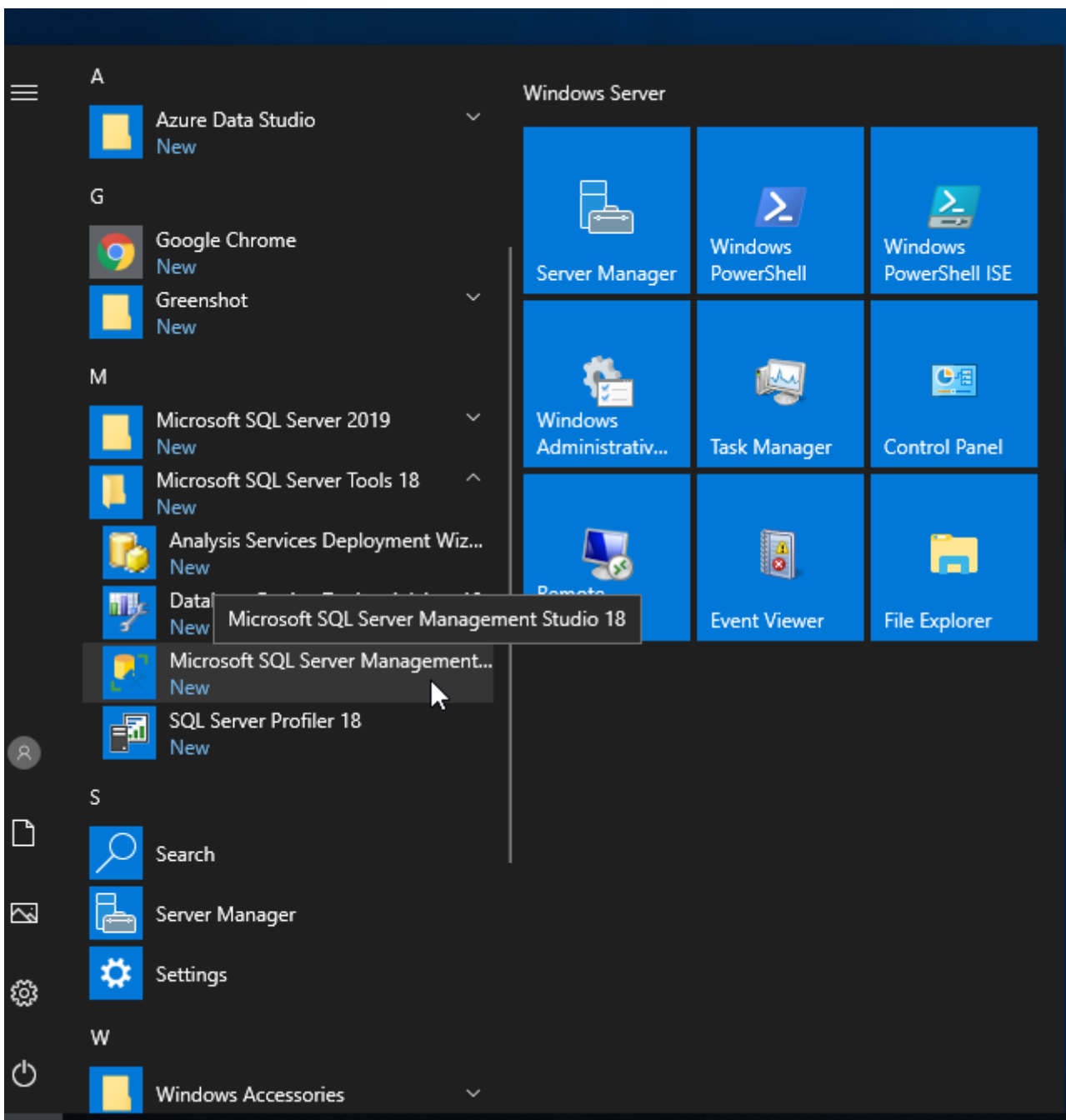
The computer needs to be restarted before setup can continue.

Restart

Close

Locating the Microsoft SQL Server Management Studio

After restarting the server you can open the Microsoft SQL Server Management Studio by clicking on the start menu and navigating to the M section and selecting it.



RabbitMQ Deployment Guide

There are several ways to deploy RabbitMQ, in this guide we will focus on the Chocolatey method, as it is the most reliable and fastest.

Install using Chocolatey

After installing chocolatey, Open a powershell prompt and type the following command

```
choco install rabbitmq
```

This command will fully install RabbitMQ and all required software, once the script is complete you can continue to the [RabbitMQ Configuration guide](#).

Deploying the Relay Controller without Docker

In this guide we will install the McTech RTLS Relay Controller software as a Windows service, not using Docker or Docker compose.

Required Software:

- Windows Server 2019 or later
- .NET Core 6
- Working MyChild6/StaffWatch6/AssetWatch6/WanderWatch6 Install

Downloading Deployment Package

When you are ready to begin deploying the Relay Controller software, you should begin by downloading the Release Software from the ftp server, it should be with the MyChild6 releases and should be named something like `McTech.RelayController.<Version>.zip`

File Deployment:

For purposes of this guide, we will assume you have downloaded the .zip file from the last step in c:\temp on the target system.

Follow these steps

- Start by unpacking the zip file
- Create a new folder at C:\Program Files\McRoberts Technologies\McTech_RelayController
- Copy the files from C:\temp\<Name_Of_Folder from step 1> into the newly created folder in step 2

Once completed, you have now successfully installed the McTech Relay Controller software, next we want to create a windows service to automatically start the software when the computer boots, to do this, run the install-service.ps1 file that should be in the same folder as the files copied from the zip folder.

Now that the Relay Controller has been installed & a windows service created, follow the steps in the Configuration Guide to get it all setup and running.