

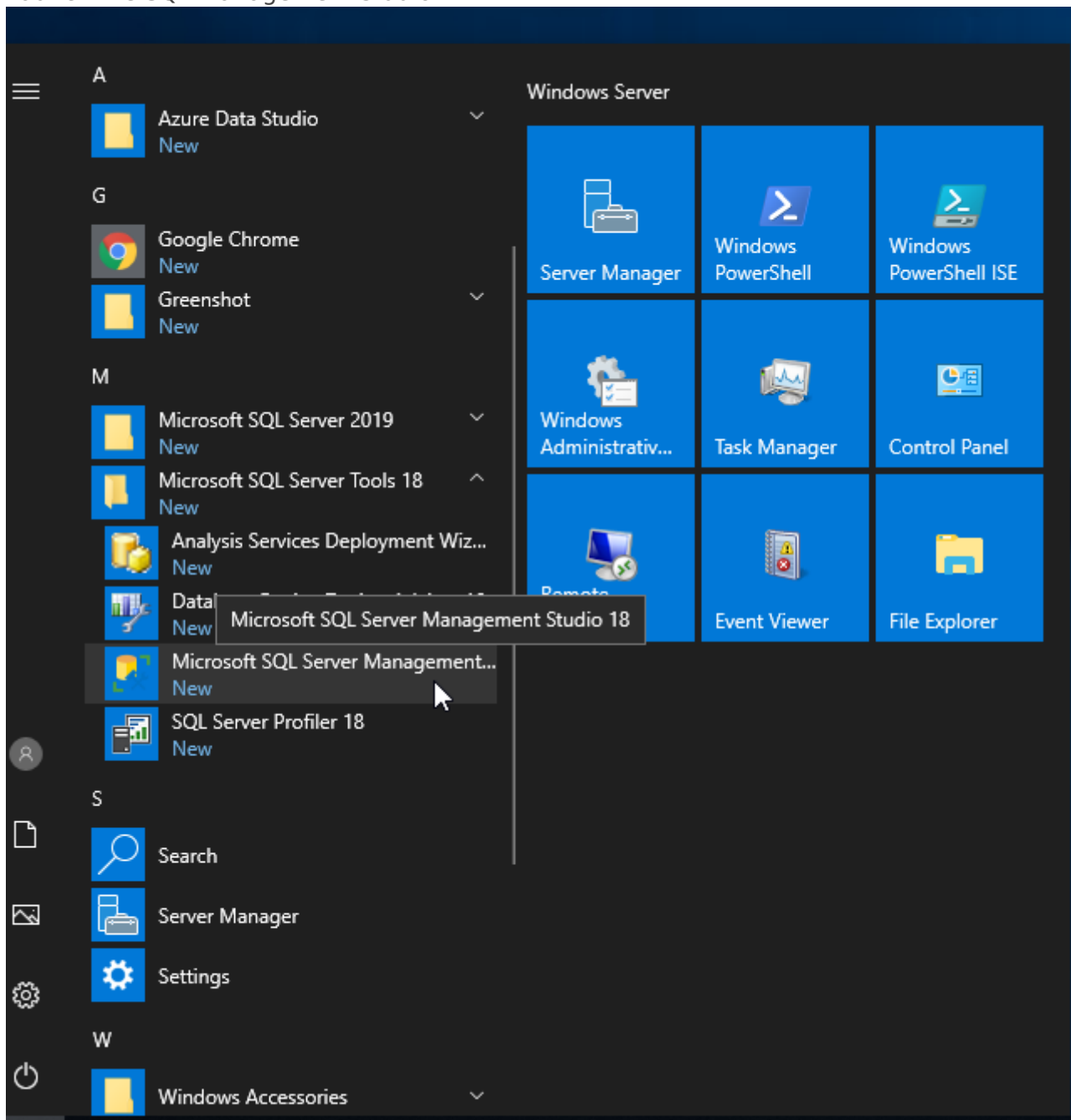
# Microsoft SQL Server Configuration

Now that you have successfully installed Microsoft SQL Server, we will need to enable SQL logins and create a user account for the MyChild6 software to use.

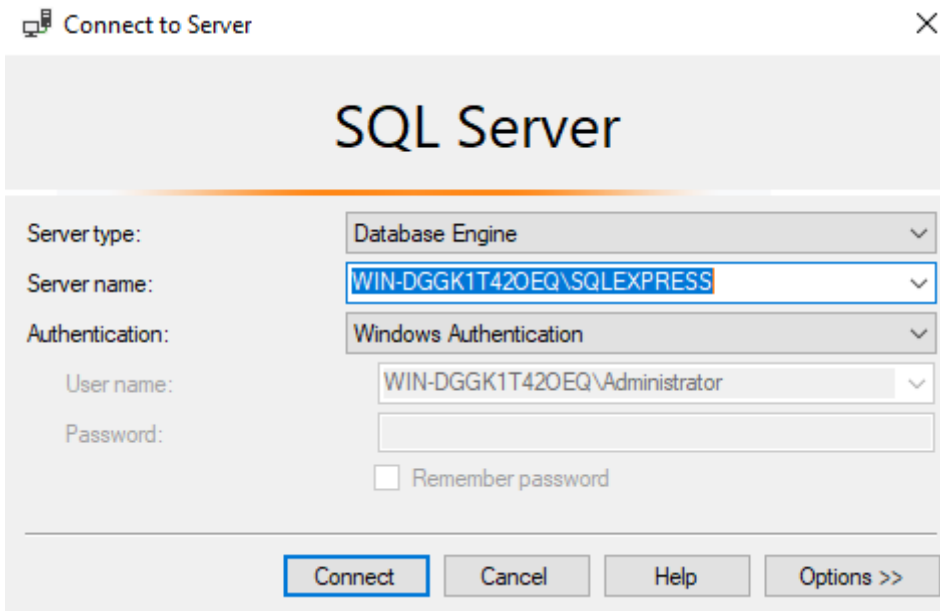
## Enable SQL Logins

Follow these steps to enable SQL Logins

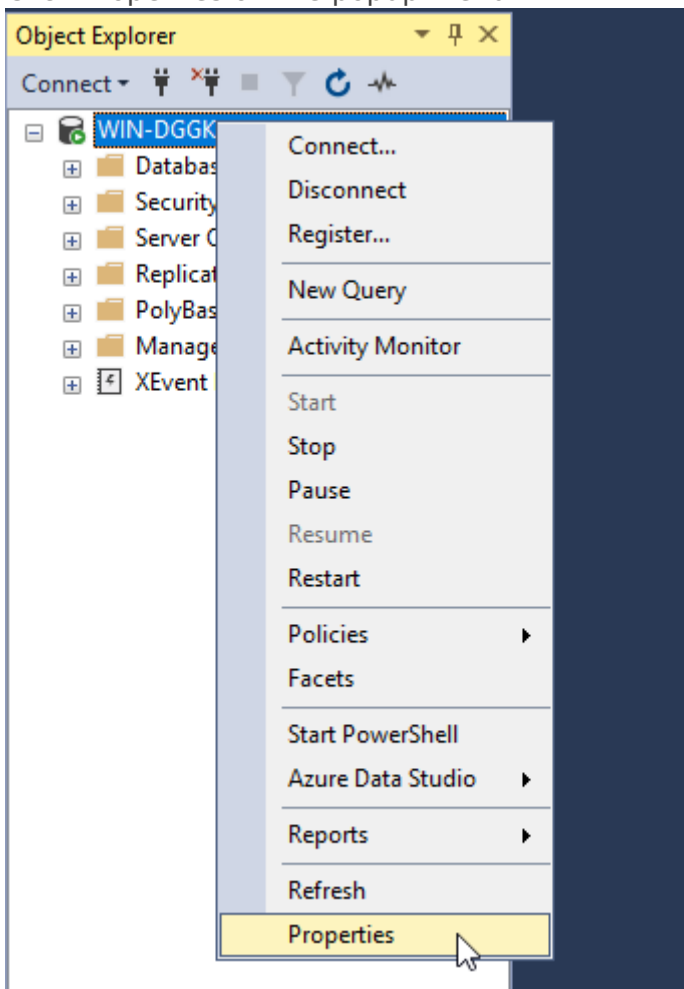
1. Launch the SQL Management studio



2. Connect to the SQL Server instance (typically localhost\sqlexpress if using SQL express)

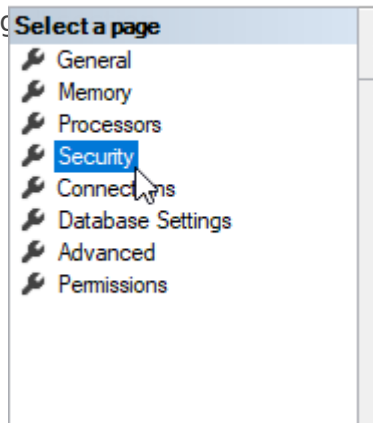


3. Once connected, locate the "Object Explorer" pane (on the left)
4. Right click on the SQL Server (Should be the top level object, with the same name as the server)
5. Click Properties on the popup menu



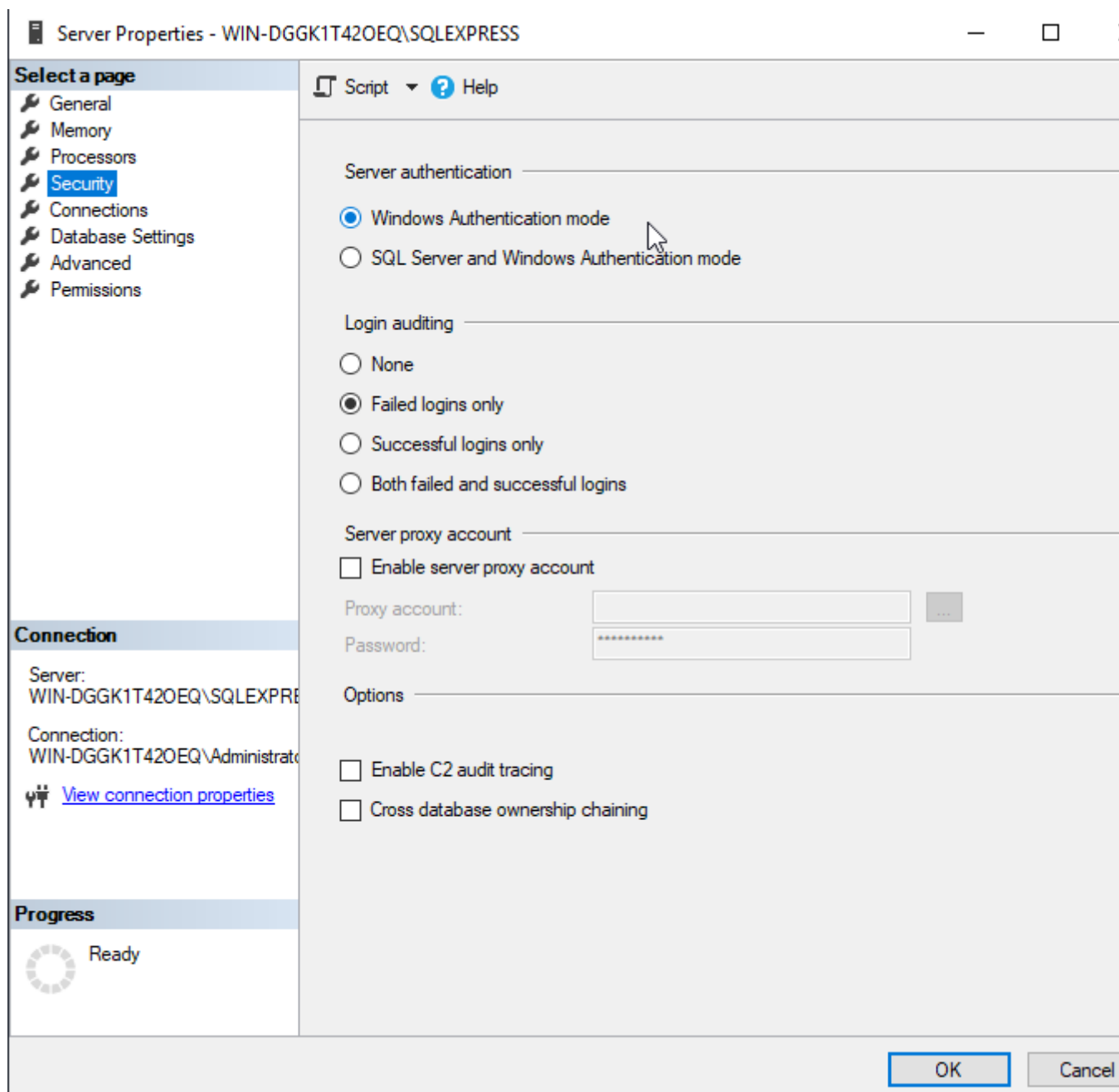
6. When the "Server Properties" window opens, locate the "Select a page" section (upper left corner)

7. Select "Security" from the "Select a page"



8. Ensure the radio button next to "SQL Server and Windows Authentication mode" is selected

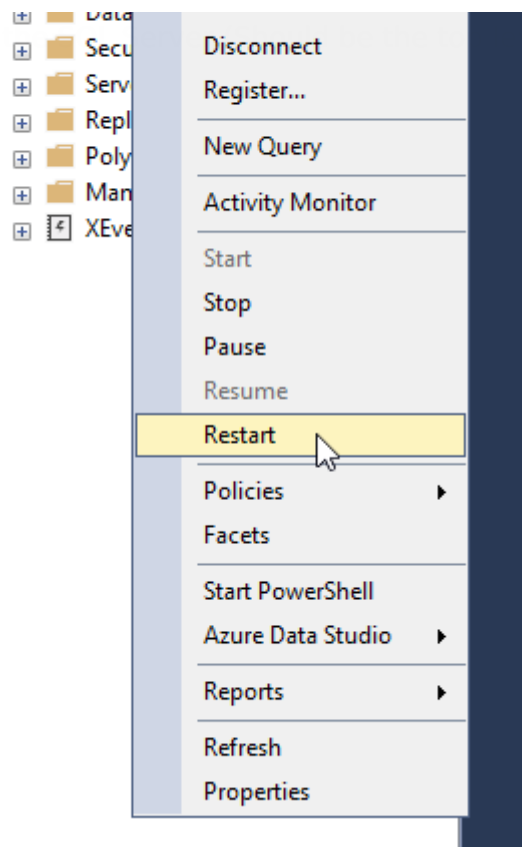
9. Click OK



Next you will need to restart the SQL Server for the changes to take effect, to restart the SQL Server, follow these steps

1. Locate the "Object Explorer" pane (on the left)

2. Right click

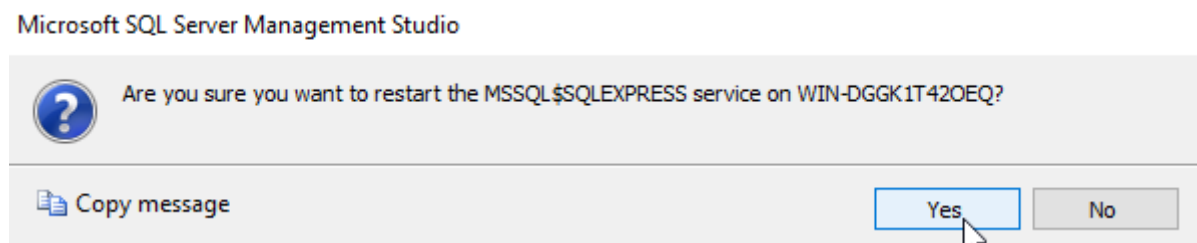


server object, with the same name as the

server)

3. Click "Restart"

4. Click "Yes" on the confirmation popup



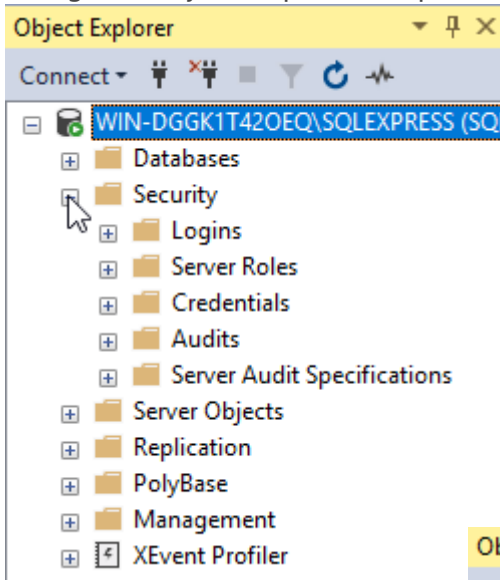
You have now successfully enabled SQL Server logins. Next we will Add a new user account.

## Create a new SQL User account

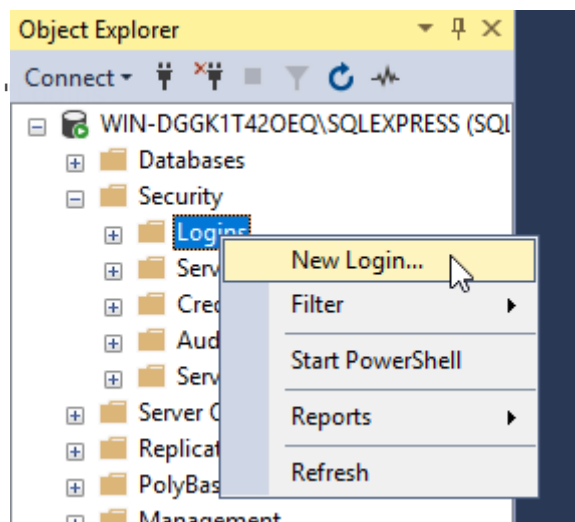
We need to create an SQL user account that the MyChild6 software can use to communicate with the database server, we will be using the SQL Management studio, Follow these steps

1. Login to the SQL Server

2. Using the Object Explorer, Expand the "Security" folder.



3. Right click on the folder labeled 'Logins'.



4. Click "New Login" from the popup menu

Once the "Login - New" window opens, follow these steps to create the user account

1. Enter a name for the user (We recommend mychild)

Login - New

Select a page

- General
- Server Roles
- User Mapping
- Securables
- Status

Script Help

Login name: mychild Search...

☐ Windows authentication  
☒ SQL Server authentication

Password: .....

Confirm password: .....

☐ Specify old password  
 Old password:

☒ Enforce password policy  
☒ Enforce password expiration  
☒ User must change password at next login

☐ Mapped to certificate  
☐ Mapped to asymmetric key  
☐ Map to Credential

Mapped Credentials

Credential	Provider

Add Remove

Default database: master

Default language: <default>

OK Cancel

Connection

Server: WIN-DGGK1T42OEQ\SQLEXPRESS

Connection: WIN-DGGK1T42OEQ\Administrator

[View connection properties](#)

Progress

Ready

2. Select the radio button next to "SQL Server authentication"
3. Enter a password and Confirm password for this account (Note: please avoid using \$ and , as special characters!)

4. Uncheck the boxes for "Enforce password policy" which should disable the next 2 checkboxes as well

**Login - New**

**Select a page**

- General
- Server Roles
- User Mapping
- Securables
- Status

Script ? Help

Login name: mychild Search...

☐ Windows authentication

☒ SQL Server authentication

Password: .....

Confirm password: .....

☐ Specify old password

Old password: .....

☒ Enforce password policy

☐ Enforce password expiration

☐ User must change password at next login

☐ Mapped to certificate

☐ Mapped to asymmetric key

☐ Map to Credential

Mapped Credentials

Credential	Provider
------------	----------

Add Remove

Default database: master

Default language: <default>

Server: WIN-DGGK1T42OEQ\SQLEXPRESS

Connection: WIN-DGGK1T42OEQ\Administrator

[View connection properties](#)

Progress

Ready

OK Cancel

5. Locate the "Select a page" section in the left pane and select the "Server Roles"

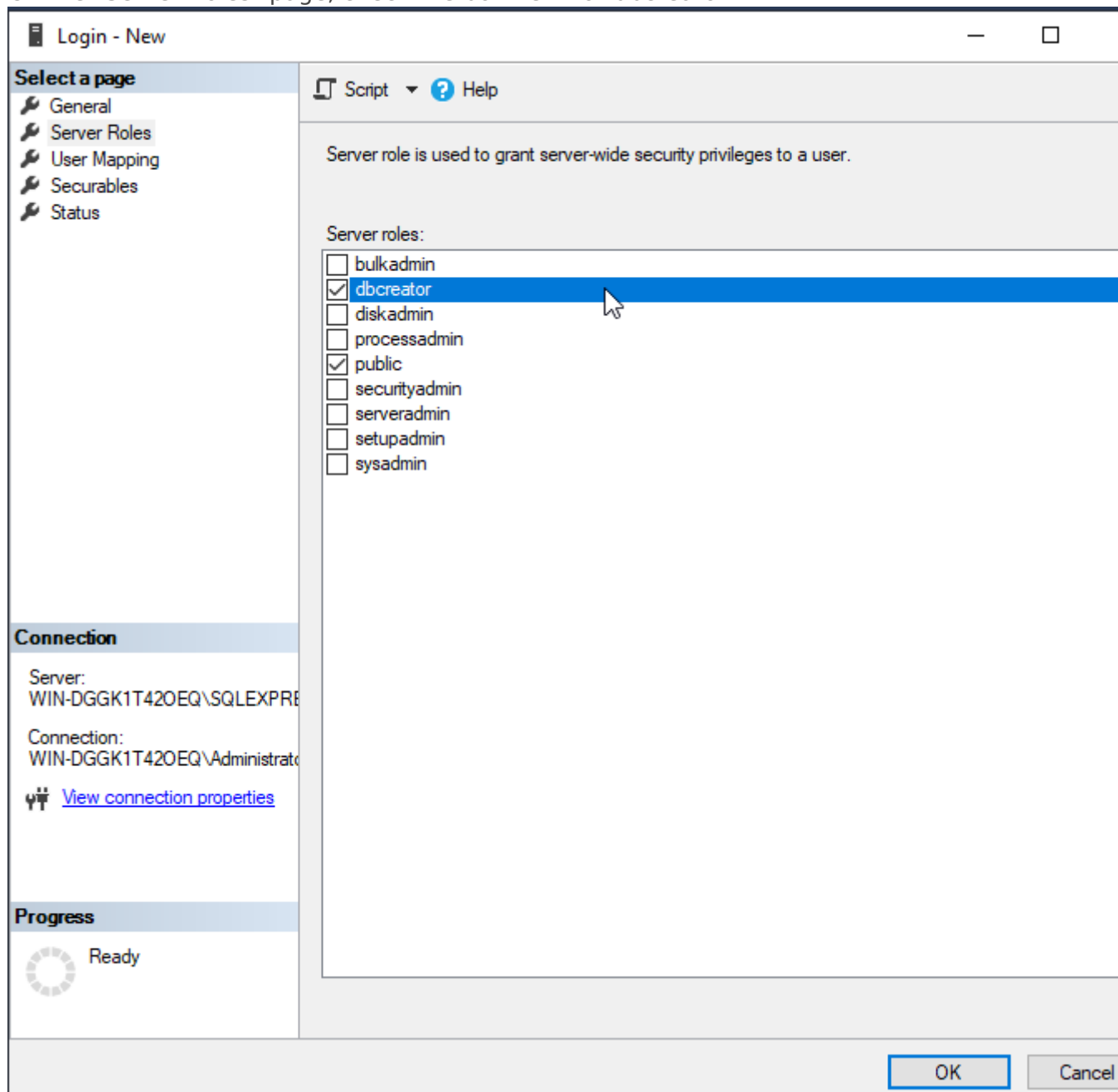
page

**Login - New**

**Select a page**

- General
- Server Roles
- User Mapping
- Securables
- Status

6. On the "Server Roles" page, check the box next to "dbcreator"



7. Click "OK"

You have now successfully created a user account on your SQL Server.

Please proceed to the [Minio Configuration Guide](#) for next steps.

---

Revision #9

Created 4 March 2022 17:46:51 by Brad Davis

Updated 7 March 2022 19:56:31 by Sarah Davis