

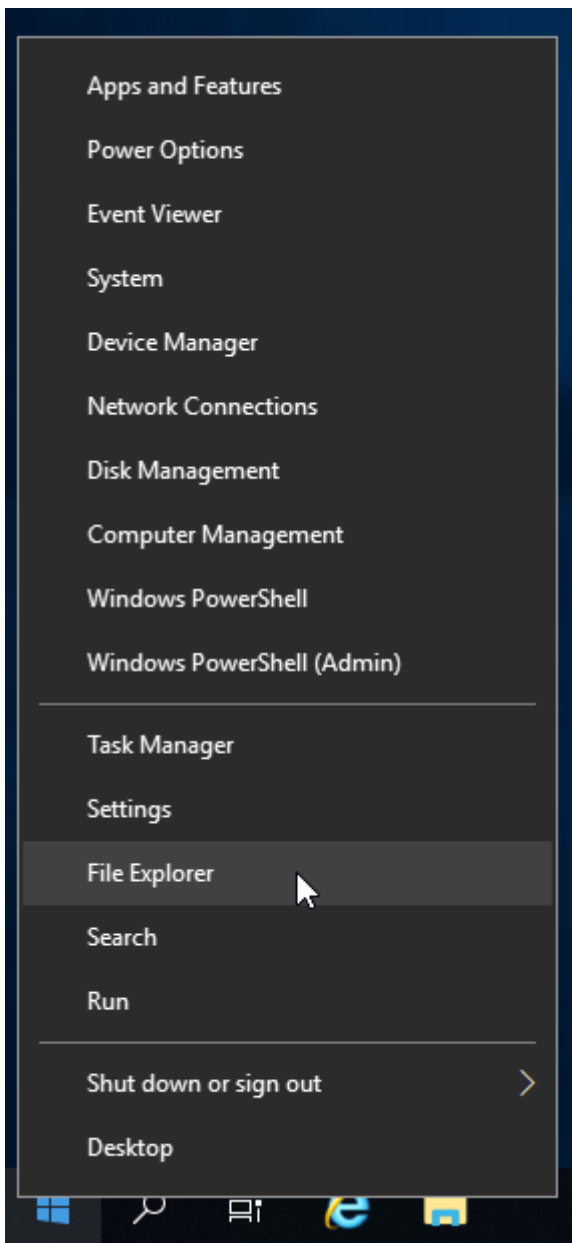
Microsoft SQL Server Deployment Guide

Finding the Installer

To begin this installation please navigate to the File Explorer on the server in question by either selecting the File Explorer icon on the Task Bar as shown below:

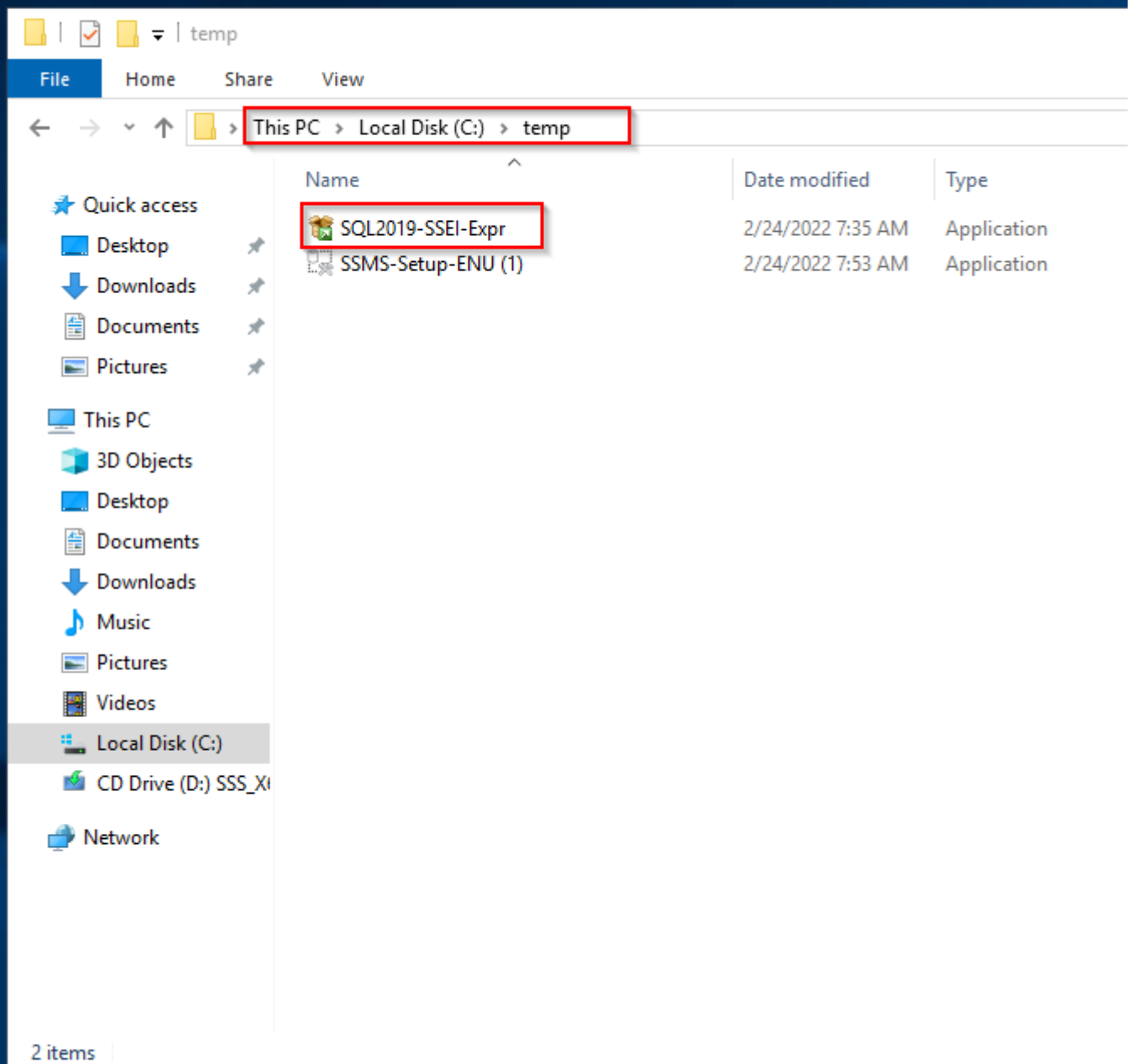


Or by right clicking the Start Menu (Windows icon) on the task bar as shown below:



You will then need to navigate to This PC (Found in the Quick Access Menu on the left in the File Explorer) > Local Disk (C:) >temp

Or C:\temp.



You will then select the SQL2019-SSEI-Expr application and double click it.

Selecting the Installation Type

Please select the Basic installation option.

SQL Server 2019 Express Edition

Select an installation type:

Basic

Select Basic installation type to install the SQL Server Database Engine feature with default configuration.



Custom

Select Custom installation type to step through the SQL Server installation wizard and choose what you want to install. This installation type is detailed and takes longer than running the Basic install.

Download M

Download SQL Server now and install them on your machine of your choice.

SQL Server transmits information about your installation experience, as well as other usage and performance data, to Microsoft to improve the product. To learn more about data processing and privacy controls, and to turn off the collection of this information after installation, see [documentation](#).

Accepting the Server License Terms

Accept the Microsoft SQL Server License Terms by selecting Accept at the bottom.

SQL Server 2019 Express Edition

Microsoft SQL Server License Terms

MICROSOFT SOFTWARE LICENSE TERMS

MICROSOFT SQL SERVER 2019 EXPRESS

These license terms are an agreement between you and Microsoft Corporation (or one of its affiliates). They apply to the software named above and any Microsoft services or software updates (except to the extent such services or updates are accompanied by new or additional terms, in which case those different terms apply prospectively and do not affect Microsoft's rights relating to pre-updated software or services). **IF YOU COMPLY WITH THESE LICENSE TERMS, YOU WILL HAVE THE RIGHTS BELOW. BY USING THE SOFTWARE, YOU ACCEPT THESE TERMS. IF YOU DO NOT ACCEPT THESE TERMS, DO NOT USE THE SOFTWARE.**

IMPORTANT NOTICE: AUTOMATIC UPDATES TO PREVIOUS VERSIONS OF SQL SERVER. If this software is installed on servers or devices running any supported editions of SQL Server prior to SQL Server 2019 (or components of such editions), this software will automatically update and replace certain files or features within those editions with files or features from this software. This feature cannot be switched off. Removal of these files may cause errors in the software and the files may not be recoverable. By installing this software on a server or device that is running such editions, you acknowledge that you accept these updates in all such editions and copies of SQL Server (including components of any of them) running on that server or device.

- 1. INSTALLATION AND USE RIGHTS.** You may install and use any number of copies of the software on any number of devices, including third party shared devices.

By clicking the "Accept" button, I acknowledge that I accept the License Terms and [Privacy Statement](#)

< Previous

Selecting the Installation Location

Unless otherwise instructed by your supervisor allow the default installation location to be used and select Install.

SQL Server 2019

Express Edition

Specify SQL Server install location

INSTALL LOCATION

C:\Program Files\Microsoft SQL Server



Browse

MINIMUM FREE SPACE

6578 MB

DOWNLOAD SIZE

266 MB

Close

< Previous

The Installation

The installer will then download the files needed for installation.

SQL Server 2019

Express Edition

Downloading install package...



Extracting rules engine...

SQL Server 2019 is also available for Linux

To obtain the SQL Server 2019 Linux images, including Containers, please see here (<https://aka.ms/sqlservercontainers>).

Pause

After downloading the installation files the installation will begin.

NOTE: This could take several minutes.

SQL Server 2019

Express Edition

Download successful!



Installing...



Installing SQL Server... Running Action: Install_SqlSupport_Cpu64_Action

Getting Started with SQL Server

Thank you for installing Microsoft SQL Server. If you are connecting to SQL Server from a remote machine, then you need to complete prerequisites mentioned in the "Before you get started" file located in the Resources folder.

Pause

Finishing the Installation

Once the installation is complete Close the installer.

SQL Server 2019 Express Edition

Installation has completed successfully!

INSTANCE NAME

SQLEXPRESS

SQL ADMINISTRATORS

WIN-DGGK1T42OEQ\Administrator

FEATURES INSTALLED

SQLENGINE

VERSION

15.0.2000.5, RTM

CONNECTION STRING

Server=localhost\SQLEXPRESS;Database=master;Trusted_Connection=

SQL SERVER INSTALL LOG FOLDER


C:\Program Files\Microsoft SQL Server\150\Setup Bootstrap\Log\20

INSTALLATION MEDIA FOLDER

C:\SQL2019\Express_ENU

INSTALLATION RESOURCES FOLDER

C:\Program Files\Microsoft SQL Server\150\SSEI\Resources

 Connect Now

Customize

Install SSMS

Revision #6

Created 24 February 2022 21:32:34 by Admin

Updated 8 March 2022 17:46:06 by Sarah Davis